

**Marek Chłodnicki, Krzysztof M.
Ciałowicz**

**Tell El-Farkha Preliminary Report,
2006**

Polish Archaeology in the Mediterranean 18, 127-153

2008

Artykuł został opracowany do udostępnienia w internecie przez Muzeum Historii Polski w ramach prac podejmowanych na rzecz zapewnienia otwartego, powszechnego i trwałego dostępu do polskiego dorobku naukowego i kulturalnego. Artykuł jest umieszczony w kolekcji cyfrowej bazhum.muzhp.pl, gromadzącej zawartość polskich czasopism humanistycznych i społecznych.

Tekst jest udostępniony do wykorzystania w ramach
dozwolonego użytku.

TELL EL-FARKHA

PRELIMINARY REPORT, 2006

Marek Chłodnicki, Krzysztof M. Ciałowicz

The fieldwork in 2006,¹ started on 11 February and continued through 18 May 2006 with intervals. Both the Eastern and Western koms were excavated until March 4, after which work continued only on the Eastern mound until April 10. The Central Kom was explored between April 20 and May 16. Some testing on the Eastern Kom was carried out between May 8 and 13.

Explorations on the Central Kom continued in the area excavated in previous years (Chłodnicki, Ciałowicz 2007b). On the Western Kom, new excavations were opened around the trench completed in 2005, adjoining the latter on the west and south (total area 14.25 a). A geophysical survey was conducted on March 31. As for the Eastern Kom, the trenches from 2005 were extended eastward, covering an area of 260 m².

1 The campaign was financed by the Jagiellonian University in Kraków, Patrimonium Foundation in Poznań and Ministry of Science (KBN). The team, headed by Marek Chłodnicki and Krzysztof M. Ciałowicz included: Joanna Dębowska, Maciej Jórdeczka, Piotr Kołodziejczyk, Marcin Krzepakowski, Ewa Kuciewicz, Anna Longa, Michał Sip, Piotr Szejnoga, Leszek Szumlas, archaeologists; Renata Abramowicz, Daniel Makowiecki, archaeozoologists; Maciej Pawlikowski, geologist; Lucyna Kubiak-Martens, palaeobotanist; Maria Kaczmarek, physical anthropologist; Tomasz Herbich, geophysicist; Mariusz Jucha, Michał Rozwadowski, ceramologists; Krzysztof Kowalski, Robert Staboński, photographers; Joanna Sawicka, Halina Żarska-Chłodnicka, documentalists; Katarzyna Błaszczuk, Artur Buszek, Marcin Czarnowicz, Magdalena Kamionka, Marta Korczyńska, Grzegorz Pryc, Magdalena Sobas, Paweł Surówka, Katarzyna Tatoń-Wyroba, Szymon Zdziebłowski, students of archaeology.

The Supreme Council of Antiquities was represented by Mustafa Ahmed Selim and Amira Elmorsy Abdel Ghany from the Mansura Inspectorate.

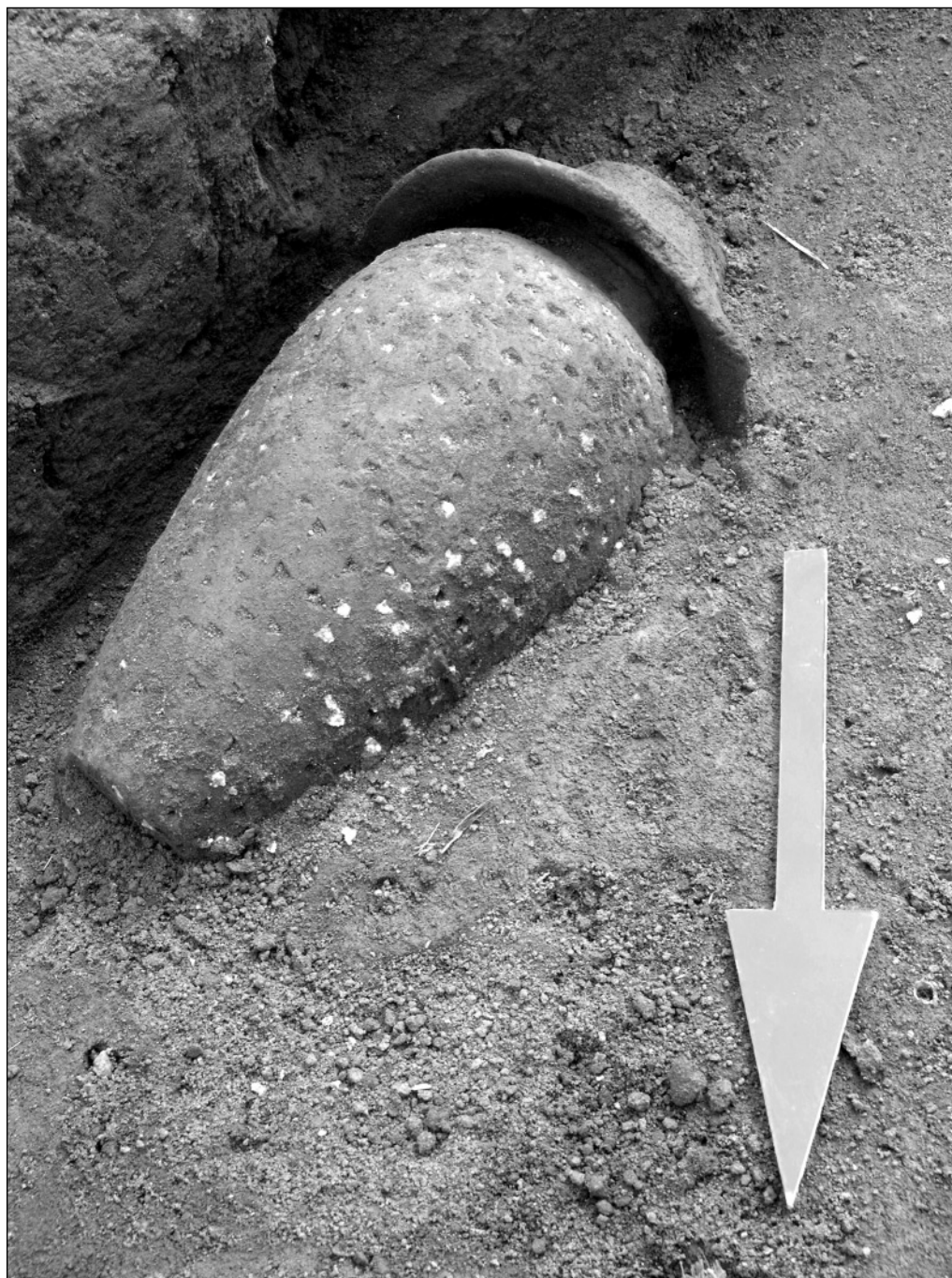
WESTERN KOM

Clearing of topsoil levels in preparation for a geophysical survey resulted in more than 14 ares of land being excavated to a depth of from 0.20 to 0.40 m. The difference in levels between the highest and lowest part of the hill due to the sloping surface was near to 2 m (between 738 and 549 m a.s.l.) and it also accounted for the different chronological and cultural layers that were explored at the same time. As a reminder, it should be said that the Western Kom at Tell el-Farkha was abandoned at the beginning of the First Dynasty (the other two koms were occupied until the beginning of the Fourth Dynasty). The topmost layers excavated in 2006 were connected with the Dynasty 0 and I chronological horizon, while the layers explored at the lower southern edge of the mound, severely damaged by a modern rubbish heap, were probably connected with Naqada III (A-B?) culture.

The most important discovery of the present season came with the exploration of layers dated to the beginning of the First Dynasty. The northwestern corner of the newly traced trench, to the west of earlier excavations, revealed thick brick walls forming a rectangular unit (8.00 by 3.30 m) on a NW-SE axis. The walls were one and a half brick thick (0.45 m). The building is a continuation on the same level of structures discovered in 2001 and interpreted then as an administrative and cultic centre (Chłodnicki, Ciałowicz 2002: 107-110 and Figs 1-5). The most important discovery at the time was a small deposit of miniature pottery and stone vessels, figurines of baboons, a crocodile, a prostrate man and five clay rattles.

A concentration of eight vessels was cleared in the middle of the newly discovered unit. Of these, two merit attention as they represent forms tentatively identified by scholars with cult or rituals of some kind. One of the bowls is what is referred to as a Nubian vessel, that is, bearing a characteristic ornament of punctured dots and incised triangles. The other is a stand and bowl, the stand with openwork decoration in the form of triangles. Below this concentration by a few centimeters, but still in the same stratum, there were two stone vessels and a thin ceramic slab, 7 cm wide, with three round containers (dia. c. 4.5 cm) filled with a black substance (scribe's palette?).

A small jar covered with a bowl was found by the eastern wall of the room [Fig. 1]. The jar (23 cm high) was decorated with punctured dots and incised decoration in the form of two quadrupeds (gazelles?) and an ostrich. Inside it, packed in tightly, there were 62 small objects – evidently a hoard of cultic items. Of these, 34 were figurines carved in hippopotamus ivory: five women, two men, two children, nine dwarfs, two captives, two fantastic creatures and twelve different animals. They were accompanied by 11 miniature vessels and 17 models of knives, boats, a mirror, game pieces, a cylindrical seal, tablets, and boxes. Different kinds of stone, clay and copper, beside hippopotamus tusks, were used to produce these objects. Five other small objects of hippopotamus ivory and faience were found scattered around the jar with the deposit, together with dozens of beads made of semiprecious stones (agate, carnelian, amethyst, hematite), limestone, faience and clay.



*Fig. 1. Western Kom. Jar with deposit in situ
(Photo R. Staboński)*

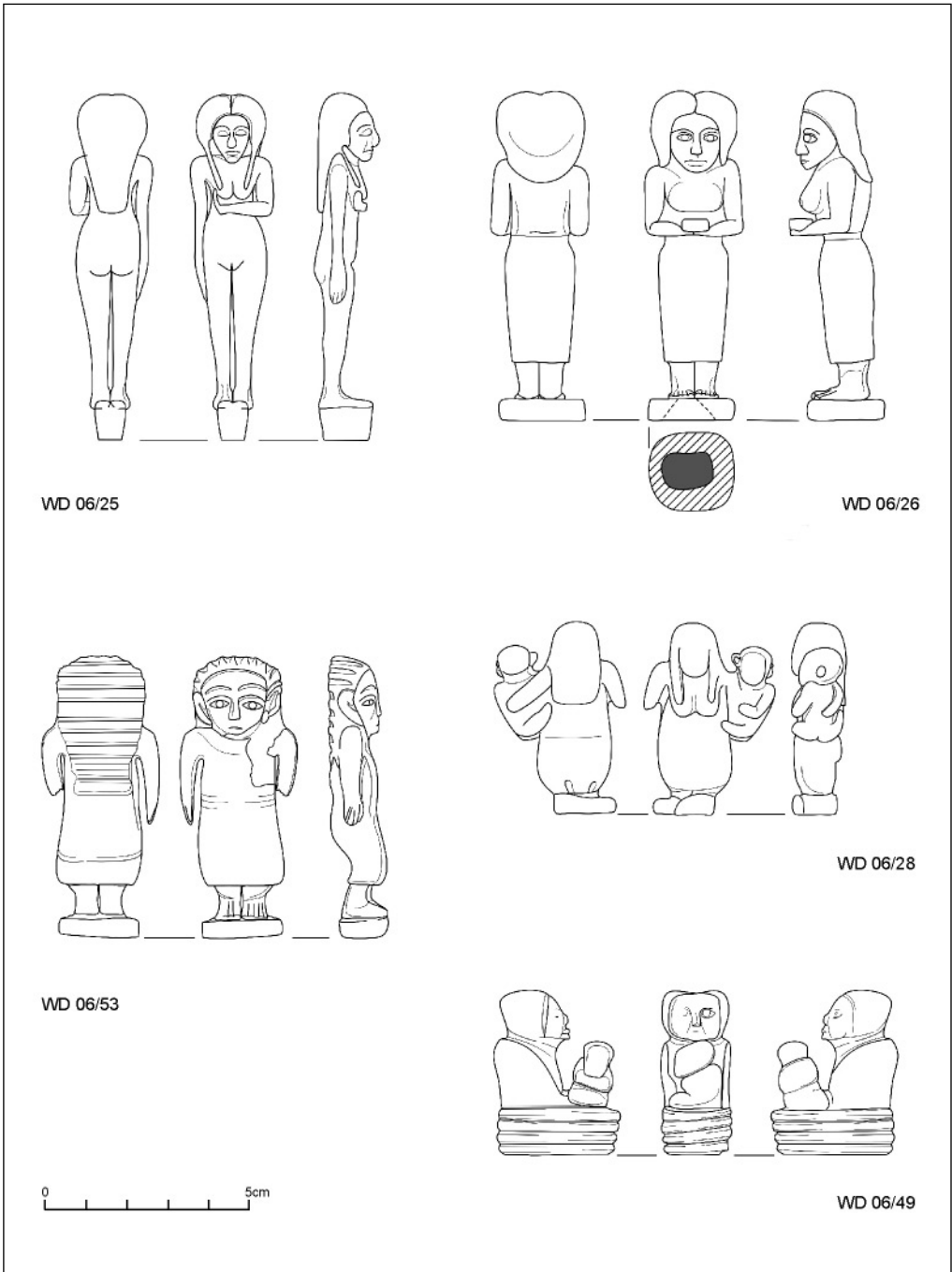


Fig. 2. Figurines of women and women holding children from the deposit
(Drawing A. Longa)

I. OBJECTS

FROM THE JAR DEPOSIT²

The catalogue presented here has been subdivided into the following categories: A. Women, B. Men, C. Dwarves, D. Captives, E. Children, F. Animals, G. Fantastic creatures, H. Small objects and models, I. Miniature vessels.

I.A.1. Woman.

D/06/25 (R-624) [Fig. 2]

Naked figure standing with legs together, right arm by the side, palm with well-modeled fingers pressed against the thigh. Left arm bent at the elbow, the hand cupped under the right breast. Features carved in detail: relatively large and narrow lips, large and hooked nose, almond-shaped eyes and arched eyebrows. The pupils are not marked, but this can be due to surface wear. The waist-long hair is parted in the middle with separate strands falling onto the breasts in front. The womb and buttocks are modeled plastically. The figurine stands on a base. Surface effaced, numerous vertical cracks. Hippopotamus tusk. H. 8.5 cm (including base 0.8 cm)

I.A.2. Woman.

WD/06/26 (R-625) [Fig. 2]

Standing figure, legs together, dressed in long, belted robe reaching down to mid-calf. Face modeled plastically (badly damaged): large, hooked nose, almond-shaped eyes, small and thick lips. Long hair parted in the middle and falling to the shoulders, bottom edge rounded. Arms bent at the elbow and extended forward, holding a bowl or plate, as if in offering. Meticulously rendered details of the toes. Low rounded base with oblong hole (1.1 x 0.8 x 0.7 cm) in the underside. Large cracks and losses. Hippopotamus tusk. H. 8.0 cm (including base 0.6 cm)

I.A.3. Woman.

WD06/53 (R-652) [Fig. 2]

Flat figure dressed in robe or cloak reaching below the slightly bent knees, standing with feet together, toes carved in detail. Arms by the sides, fingers marked. Face expressive with large almond-shaped eyes, clearly marked eyebrows and small, relatively thick lips below a broad, straight nose. Ears large and sticking out, the left one carved more deeply. Waist-long hair with waves marked horizontally on the back, going from fore to back on the crown. The figure stands on a low oval base. Missing lower part of left arm from the elbow and parts of the torso from the front and back; minor delamination. Hippopotamus tusk. H. 6.9 cm (including base 0.5 cm)

I.A.4. Woman holding child.

WD/06/28 (R-627) [Fig. 2]

Figure dressed in an ankle-length robe. Long hair on the back, falling in two strands onto ample breasts. The face has not been preserved, but it must have been carved schematically. Right arm (partly preserved) presumably hanging loosely by the side, left arm supporting a child carried on the hip. The child has a round head and sticking-out ears; the other facial features were not rendered in any detail. Its left arm is bent at the elbow and rests against its chest. The figure stands on a low base. Severely damaged, parts of heads, feet and the base missing. Hippopotamus tusk. H. 4.7 cm (including base 0.5 cm)

I.A.5. Woman and child.

WD06/49 (R-648) [Fig. 2]

Two figures sitting in a basket (palanquin?) made up of four horizontal segments. The woman is presented from the waist up. The cloak enveloping the

² Field inventory numbers (e.g., WD/06/01-62) are followed by inventory numbers from the SCA register at Mansura (e.g., R-600-661).

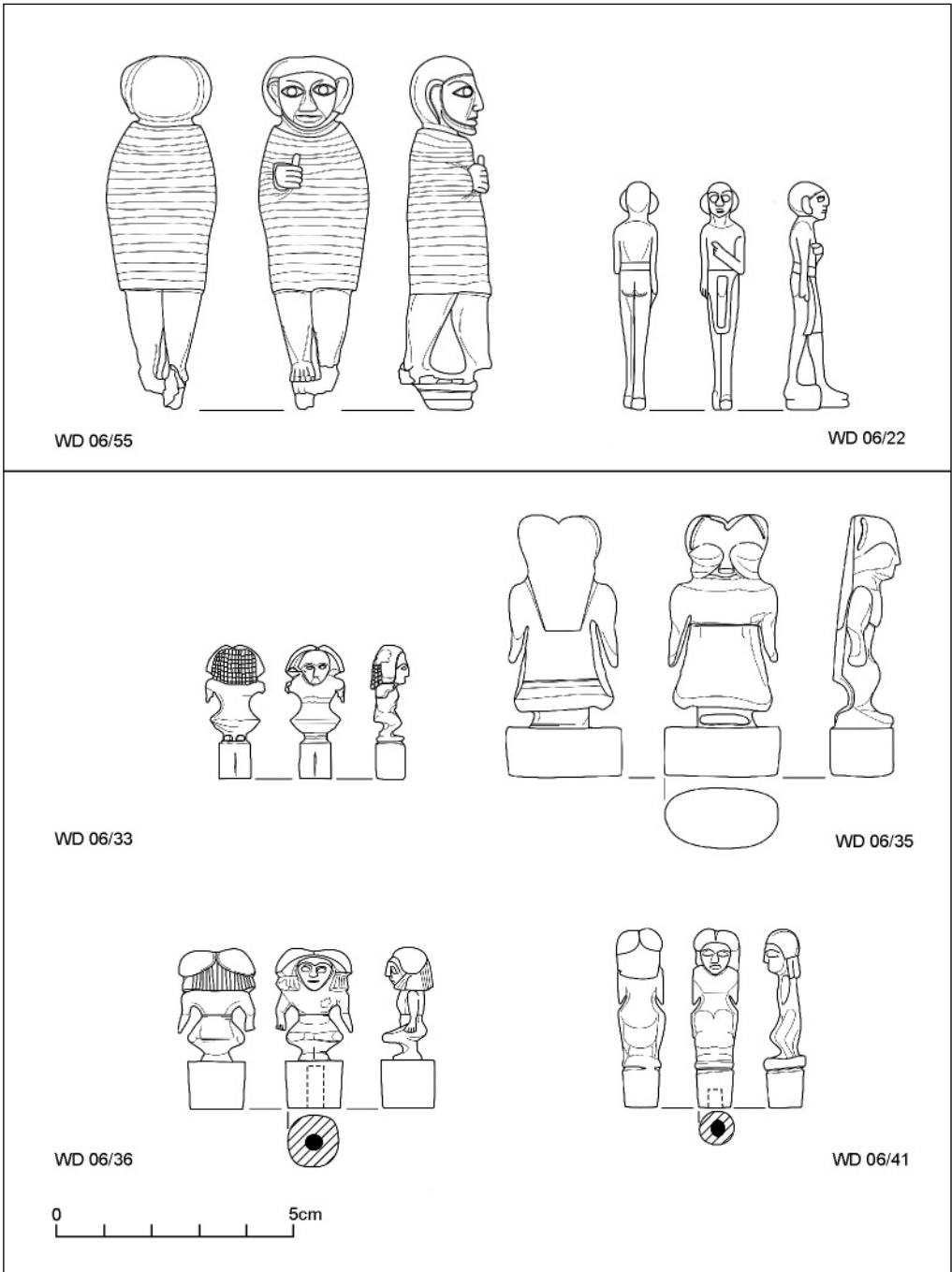


Fig. 3. Figurines of king (?) (top left), man (top right) and female dwarves from the deposit (Drawing A. Longa)

schematically rendered body is discerned at the neckline. Despite severe effacement, the face shows almond-shaped eyes and lips, as well as a straight and narrow nose. The hair is parted in the middle of the head, most probably meant to fall to the shoulders. A child sits sideways on the figure's knees. It, too, is rendered schematically, bundled up with the arms in front. Extensive delamination and vertical cracking, surface effaced. Hippopotamus tusk. H. 4.1 cm; basket 1.5 x 2.8 cm

I.B.1. Man (king ?)

WD06/55 (R-654) [Fig. 3]

Striding figure in knee-length cloak, supported on the right leg (with clearly marked toes), left leg extended forward. Right hand appearing from under the dress, originally holding some object (most probably a *heka*-scepter or other power insignia). Horizontal striping carved on the cloak. The face is effaced, but the features are clear: almond-shaped eyes below arched eyebrows, relatively small and straight nose, and small, thick lips. Cuts below the mouth and on the cheeks suggest a beard. Ears (poorly preserved) large and protruding. Smooth (?) hair reaching the neck. The figure stands on a low base. Missing left foot with most of the base and fragments of the hand, numerous losses on the back and head; severe cracking and delamination of the surface. Hippopotamus tusk. H. 7.5 cm

I.B.2. Man.

WD/06/22 (R-621) [Fig. 3]

Striding figure with left leg forward. Right arm by the side, fist clenched with thumb sticking out. Left arm bent at the elbow, fist clenched and placed against the chest. Face modeled plastically: almond-shaped eyes below well-marked eyebrows, large nose with broad nostrils, relatively thick lips and sticking-out ears. Hairline

drawn over the forehead. The waistband of the loincloth modeled on the back, unpreserved penis-sheath dividing the cloth in front. The figure stands on a base. Numerous losses on the surface. Hippopotamus tusk. H. 4.8 cm (including base 0.2 cm)

I.C.1. Female dwarf.

WD/06/33 (R-632) [Fig. 3]

Crouching figure dressed in ankle-length robe. Feet together with clearly modeled heels, knees bent and spread wide. Arms (partly lost) probably short and pulled away from the body. Face modeled with eyebrows and almond-shaped eyes emphasized by carving. Nose relatively narrow and straight, lips not marked. Head covered with a shoulder-length wig parted on top and decorated with a network pattern on the back. Represented on a high but narrow base. Hole in the base (dia. 0.2 cm, 0.8 cm deep). Hippopotamus tusk. H. 2.8 cm (including base 0.8 cm)

I.C.2. Female dwarf.

WD06/35 (R-634) [Fig. 3]

Highly schematic figure in long robe, legs bent, knees spread and feet together. Short arms hanging by the sides, muscles softly marked, hands modeled schematically, fingers not marked at all. Breasts signified by a single undercutting. Face exceedingly simple with only the lips rendered in any detail. Long hair parted in the middle, reaching to the middle of the back. Medium-high oblong base (2.5 x 1.4 cm). Well preserved, few losses. Hippopotamus tusk. H. 5.9 cm (including base 1.2 cm)

I.C.3. Female dwarf.

WD06/36 (R-635) [Fig. 3]

Standing figure in long robe, knees bent and spread wide, feet together. Body modeled schematically and only the short arms shaped more carefully, held away

from the body and bent at the elbows. Hands with fingers carved. Face almost triangular, inclined to the left. Clearly marked eyebrows, almond-shaped eyes, small, thick lips and straight nose. Heavy wig, parted in the middle, smooth on top, superimposed on the section falling to the shoulders, rendered in imitation of straight plaiting at the back and gathered into two locks in front on either side of the face. Cylindrical base (Dia. 1.2 cm) with a hole drilled from the underside (Dia. 0.3 cm; 0.9 cm deep). Well preserved except for left breast and right knee, which are missing; numerous fractures. Hippopotamus tusk. H. 3.4 cm (including base 1.0 cm)

I.C.4. Female dwarf.

WD06/41 (R-640) [Fig. 3]

Schematic standing figure in long robe with legs slightly bent at the knees. Short arms modeled schematically alongside the body. Face comparatively better represented (although somewhat effaced surface): almond-shaped eyes, eyebrows, small nose and mouth. Long hair (most probably a wig) parted on the top of the head, reaching to the shoulders. Round base (Dia. 0.7 cm) with hole in the underside (Dia. 0.3 cm; 0.4 cm deep). Numerous cracks and vertical delamination. Hippopotamus tusk. H. 3.8 cm (including base 0.8 cm)

I.C.5. Female dwarf.

WD06/42 (R-641) [Fig. 4]

Schematic standing figure probably in long robe with knees slightly bent. Short stub arms alongside body. Breasts marked rudimentarily. No facial features, possibly explained by the effaced and burnt surface. Centrally parted wig presumably, composed of smooth hair on the top of the head and thin waist-long plaits rendered as a checkered pattern on the back. Oval base (1.2 x 0.9 cm) with hole in underside (Dia. 0.4 cm; 0.8 cm deep). Numerous cracks,

fragments of face missing. Hippopotamus tusk. H. 3.3 cm (including base 0.8 cm)

I.C.6. Female dwarf (?)

WD06/43 (R-642) [Fig. 4]

Schematic standing figure in long robe with slightly bent knees. Body rendered schematically modeled, breasts faintly emphasized. Short stub arms alongside body. Head round and flat without any trace of hairdo. Schematic face with cuts for eyes and lips and plastically modeled nose. Oval base (2.2 x 1.2 cm). Numerous cracks, missing small fragments. Hippopotamus tusk. H. 3.9 cm (including base 0.4 cm)

I.C.7. Female dwarf.

WD06/48 (R-647) [Fig. 4]

Standing figure on bent knees, probably in knee-length robe. Feet separate with toes pointing inward, imparting a specific air of deformation. Short stub arms, bent at the elbows. Trunk modeled schematically. Face with plastically modeled features: eyebrows over faintly marked eyes and small, straight nose. No mouth. Large ears sticking out from beneath a heavy wig, the latter composed of two parts: smooth cover on top, parted in the middle, overlying straight hair falling to the shoulders at the back. Round base (Dia. 1.2 cm) with hole in underside (Dia. 0.3 cm; 0.8 cm deep). Good state of preservation, numerous cracks and small loss at the back of the right hand. Hippopotamus tusk. H. 3.1 cm (including base 0.8 cm)

I.C.8. Female dwarf.

WD06/51 (R-650) [Fig. 4]

Standing figure with knees bent and spread, toes pointing inward. Probably wearing knee-long robe. Body rendered schematically, just like the short stub arms on either side of the trunk. Face worked in greater detail: strong eyebrows over fainter almond-shaped eyes and weaker nose,

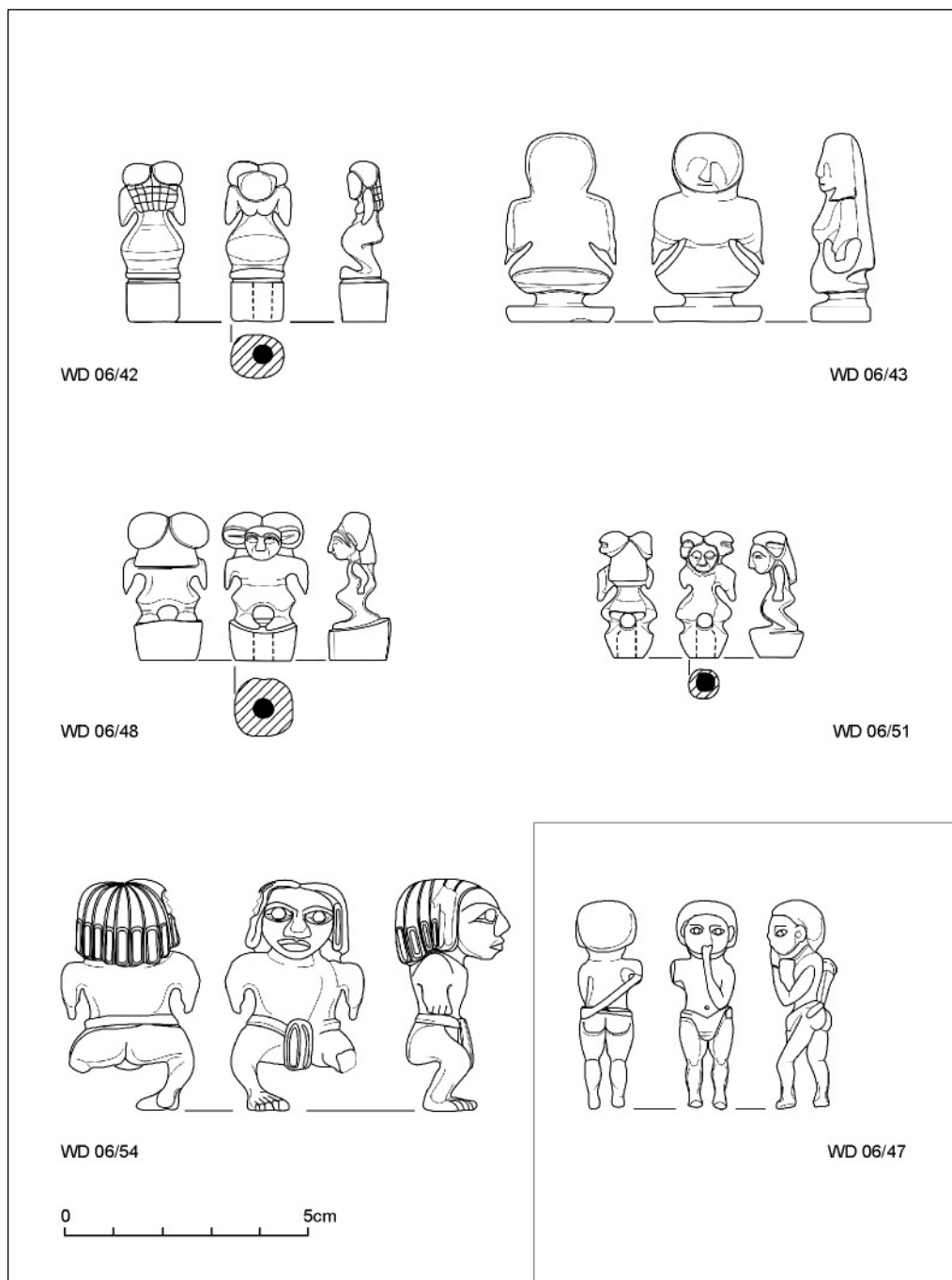


Fig. 4. Figurines of female dwarves, a male dwarf (bottom left), and a captive (bottom right) (Drawing A. Longa)

although this could be due to the state of preservation. Head covered with large and heavy wig composed of two parts. The upper element apparently arranged in curls or plaits, while the lower part falls smoothly to the middle of the back. Presumably large and sticking out ears shown under the wig. Round base (Dia. 0.7 cm). Head cracked horizontally, parts of the trunk and right leg missing, as well as the right hand; numerous fractures and chafing on the surface. Hippopotamus ivory. H. 2.6 cm (including base 0.6 cm)

I.C.9. Male dwarf.

WD06/54 (R-653) [Fig. 4]

Realistically modeled figure on bandy legs and inward pointing toes, dressed in loincloth holding up a penis-sheath, which looks as if it was of cloth. Marked torso muscles and disproportionately short arms, reaching only to the waist. Fingers carved. Plastically modeled buttocks. Head disproportionately large and round with almond-shaped eyes and strong eyebrows. Nose big and broad, mouth fleshy and thick. Hairdo centrally parted, reaching the shoulders. Particular strands marked vertically with engraved lines, each strand rounded at the bottom. Numerous losses and cracks on the torso, left leg missing, surface effaced and cracked. Hippopotamus ivory. H. 4.8 cm

I.D.1. Captive.

WD06/47 (R-646) [Fig. 4]

Standing male figure with left leg extended forward and bent at the knee. Left arm bent at the elbow and hand (partly unpreserved) close to the mouth. Right arm twisted back and presumably tied at the waist. The figure is naked except for a penis-sheath held up by a loincloth girding the waist. Buttocks modeled plastically. Facial features mostly effaced: eyes faintly visible, nose lost, hairline almost unnoticeable. A beard

seems feasible. Body muscles are rendered in carving, especially the bulging thighs and buttocks. Numerous cracks and effaced surface; missing fragments of hands and the right foot. Hippopotamus ivory. H. 4.3 cm

I.D.2. Captive (?)

WD06/62 (R-661)

Poorly preserved with only a fragment of the head and shoulder-length hairdo on the left side still present. Nose and mouth are missing, but the eyes were almond-shaped. The preserved part of the right shoulder and a hint of an arm twisted back suggest that the figure could have had its hands tied behind its back. The better preserved lower part indicates a long robe. The figure was kneeling on a round base. Hippopotamus tusk. H. 5.4 cm

I.E.1. Boy.

WD06/39 (R-638) [Fig. 5]

Slender figure of boy sitting on the ground. Face modeled distinctively with large, almond-shaped eyes featuring clearly marked pupils over a slightly snub-nose and relatively wide and thick mouth. Ears large and unnaturally sticking out. Hairline over the forehead goes down to the ears. Knees drawn up and spread wide, feet together. Toes modeled clearly. Left arm bent at the elbow, the hand with its disproportionately long and thin fingers resting on the knee. Right elbow on right knee, the hand put to the mouth with three fingers closed, thumb extended and index finger (partly preserved) touching the lips. Cracked vertically, presenting spot delamination. Hippopotamus ivory. H. 8.4 cm

I.E.2. Boy.

WD06/40 (R-639) [Fig. 5]

Stocky figure of naked boy sitting on the ground. Face modeled distinctively. Eyes large and almond-shaped, nose large, wide and crooked, mouth relatively wide

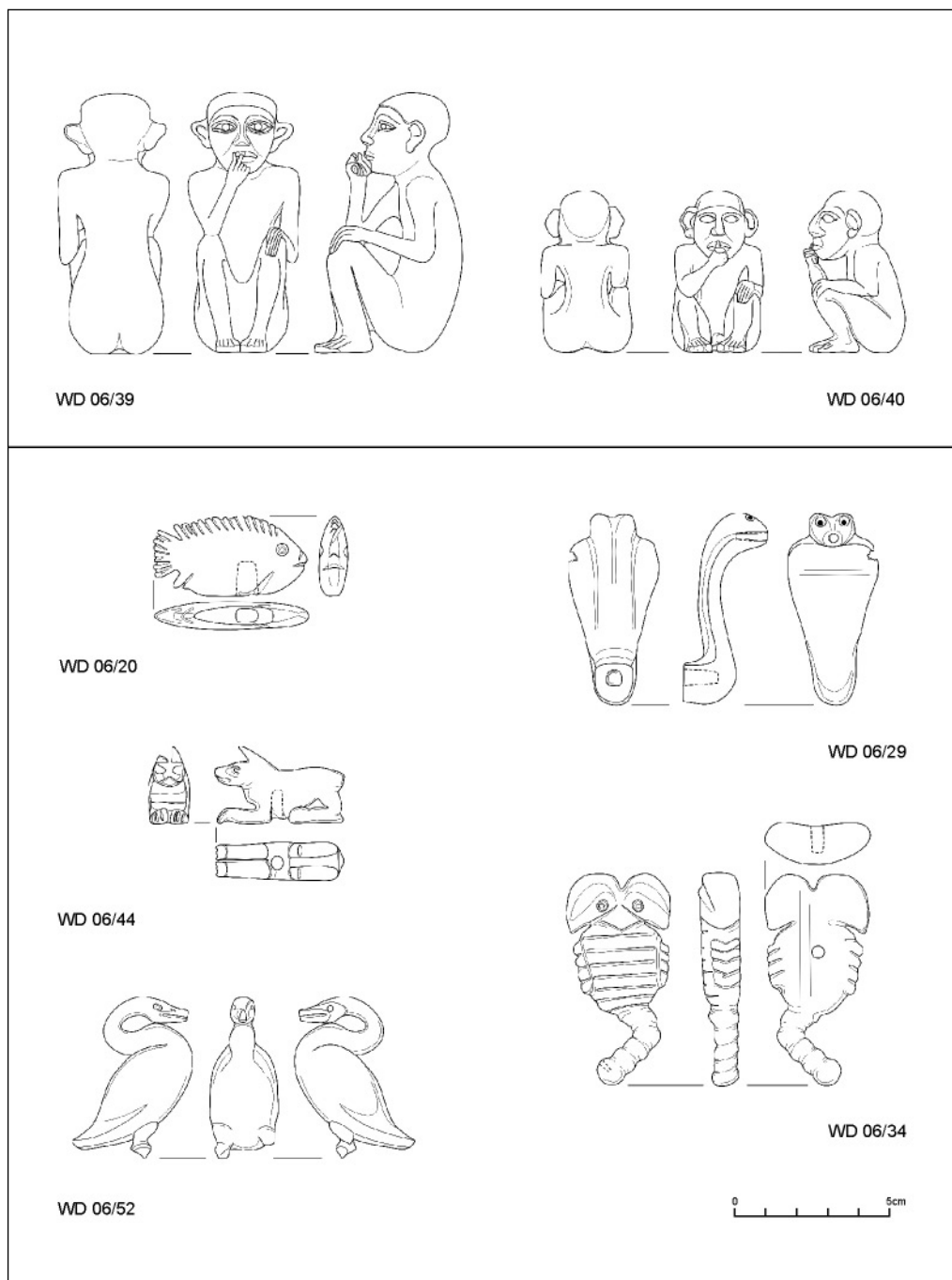


Fig. 5. Figurines of boys (top row) and animals: fish, dog, cobra, scorpion and water bird (Drawing A. Longa)

and thick-lipped. Ears large, unnaturally sticking out. Hairline over the forehead going down to the ears and to the back of the head. Genitals modeled, buttock line also clearly emphasized. Knees drawn up and outwards, feet with plastically modeled toes placed together. Left arm bent at the elbow, the hand with its disproportionately long and thin fingers resting on the knee. Right elbow leaning against right knee, hand placed at mouth level with the thumb or index finger (partly preserved) touching the lips. Hippopotamus tusk. H. 5.2 cm

I.F.1. Animal head (crocodile?)

WD/06/10 (R-609)

Probably amulet. Strongly marked ears and jaws. Light-green faience. 3.5 x 1.5 x 2.0 cm

I.F.2. Fish (Tilapia ?).

WD/06/20 (R-619) [Fig. 5]

Fins marked by incisions, snout engraved. Eyes round with dot pupils. Elliptic hole in the base (0.7 x 0.3 cm; 1.1 cm deep). Hippopotamus tusk. 2.9 x 5.0 x 0.9 cm

I.F.3. Lion or dog.

WD/06/24 (R-623)

Schematic figurine pierced crosswise through the trunk. Shown lying with paws to the front. Tail marked at the back of the body. Numerous surface cracks revealing a white substance covered with a grey one on top. Made of weakly baked silt, presumably on a faience or limestone core. 2.8 x 4.3 x 1.5 cm

I.F.4. Lion or dog.

WD06/57 (R-656)

Animal shown lying with the front paws tucked underneath. Head schematic with long rounded muzzle, almond-shaped eyes and almost round ears. At the back of the figure a distinctive short and thick tail. Back slightly bent, paws with visibly marked claws. Species identification

difficult because of surface effacement, but lion possible judging by the shape of the head and ears. Extensive horizontal and vertical delamination, many losses. Hippopotamus tusk. 3.2 x 6.5 x 2.1 cm

I.F.5. Dog.

WD06/44 (R-643) [Fig. 5]

Lying animal with paws next to one another and placed forward. Plastically rendered muzzle, eyes engraved. Left ear damaged and only base of the tail preserved. Hole in the underside (Dia. 0.5; 0.8 cm deep). Numerous cracks. Hippopotamus tusk. 2.2 x 4.5 x 1.3 cm

I.F.6. Rearing cobra (uraeus).

WD/06/29 (R-628) [Fig. 5]

Plastically modeled head. Round eyes engraved. Hole in place of the jaws (Dia. 0.3 cm; 1 cm deep), most likely for mounting a tongue made of different material. Plastically modeled back and hood. Hole (Dia. 0.5 cm; 1.1 cm deep) pierced horizontally into the section of the snake's body at the back. Generally well preserved, missing small part on the left side of the hood and by the lower hole. Hippopotamus tusk. H. 6.1 cm

I.F.7. Rearing cobra (uraeus).

WD/06/30 (R-629)

Plastically modeled head. Round eyes engraved. Hole in place of the jaws (Dia. 0.3 cm; 1 cm deep) for mounting a tongue made of different material. Plastically modeled back and hood. Hole (Dia. 0.6 cm; 1.5 cm deep) pierced horizontally into the section of the snake's body at the back. Numerous cracks, missing fragments from the left part of the hood and by the lower hole. Hippopotamus tusk. H. 6.1 cm

I.F.8. Rearing cobra (uraeus).

WD/06/31 (R-630)

Plastically modeled head. Round eyes, pupils marked with apertures. Hole in place of the jaws (Dia. 0.3 cm; 1 cm deep) for mounting a tongue made of different

material. Plastically modeled back and hood. Hole (Dia. 0.5 cm; 1.2 cm deep) pierced horizontally into the section of the snake's body at the back. Generally well preserved, small loss in left part of hood. Hippopotamus tusk. H. 6.3 cm

I.F.9. Rearing cobra (uraeus).

WD/06/32 (R-631)

Plastically modeled head. Eyes not marked. Hole in place of the jaws (Dia. 0.3 cm; 1 cm deep) for mounting a tongue made of different material. Plastically modeled back and hood. Hole (Dia. 0.6 cm; 1.3 cm deep) pierced horizontally into the section of the snake's body at the back. Numerous cracks and losses, mostly at the outer edges. Hippopotamus tusk. H. 7.3 cm

I.F.10. Scorpion.

WD06/34 (R-633) [Fig. 5]

Body covered with schematically modeled scales, emphasized by deep carving. Four legs modeled on either side. Eyes well marked on the head with disproportionately large pincers. Tail round in section with emphasized by carving. Round hole (0.2 x 0.4 cm) in last segment, presumably for mounting the sting made of different material. Round hole on the underside of the body (0.4 x 1.0 cm), most likely to mount the figure. Hippopotamus tusk. 6.8 x 3.3 x 1.3 cm.

I.F.11. Water bird (goose?).

WD06/52 (R-651) [Fig. 5]

Body plastically modeled, wings marked with carving. Neck long and curving, head bent. Eyes round, flat carved beak. Legs short, cylindrical. One leg broken off, parts of the body and beak missing. Hippopotamus tusk. H. 5.0 cm

I.F.12. Falcon.

WD/06/27 (R-626)

Highly schematic representation of a bird. Hole in central part of the body supposedly for attaching the figure to a base. Part of head missing, cracks and

losses on the bird's neck. Hippopotamus tusk. L. 6.6 cm

I.G.1. Fantastic creature.

WD06/37 (R-636) [Fig. 6]

Winged creature with bird's head and lion's or panther's body, shown sitting with human hands resting on a high jar (wine jar ?) held between the knees. The beak is that of a bird of prey (falcon ?). Bulging eyelids emphasize almond-shaped eyes. The pointed ears are partly lost. Breasts modeled on the front of the body and small cuts on the back, presumably imitating feathers. The bulge in the lower part of the figure is most likely a tail. Arms are bent at the elbows, the hands featuring distinctive human fingers. Feet are more like feline paws without toes. Low flat base. Figurine broken vertically, extensive delamination; beak, ears and parts of the jar rim missing. Hippopotamus tusk. H. 7.2 cm (including base 0.6 cm)

I.G.2. Fantastic creature.

WD06/56 (R-655) [Fig. 6]

Small standing figure, very schematically worked. Snake-like body and human (female?) face with almond-shaped eyes, emphasized eyebrows, relatively wide nose and small mouth. Hairline observed on the forehead; the hair parted on top of the head and falling on either side, passing into a bulge that suggests transition into a snake's body. It is not clear what the other bulge on the right is. Double shape protruding from the back of the base – either the tail of a snake or the bottom part of its hood. The sides of the base decorated with an oblique hatched pattern and dot in the centre (basket?). Round hole in the base (Dia. 0.3 cm) with remains of a bone peg for mounting the figure. Well preserved; small losses in the base. Hippopotamus tusk. H. 2.4 cm (including base 0.8 cm)

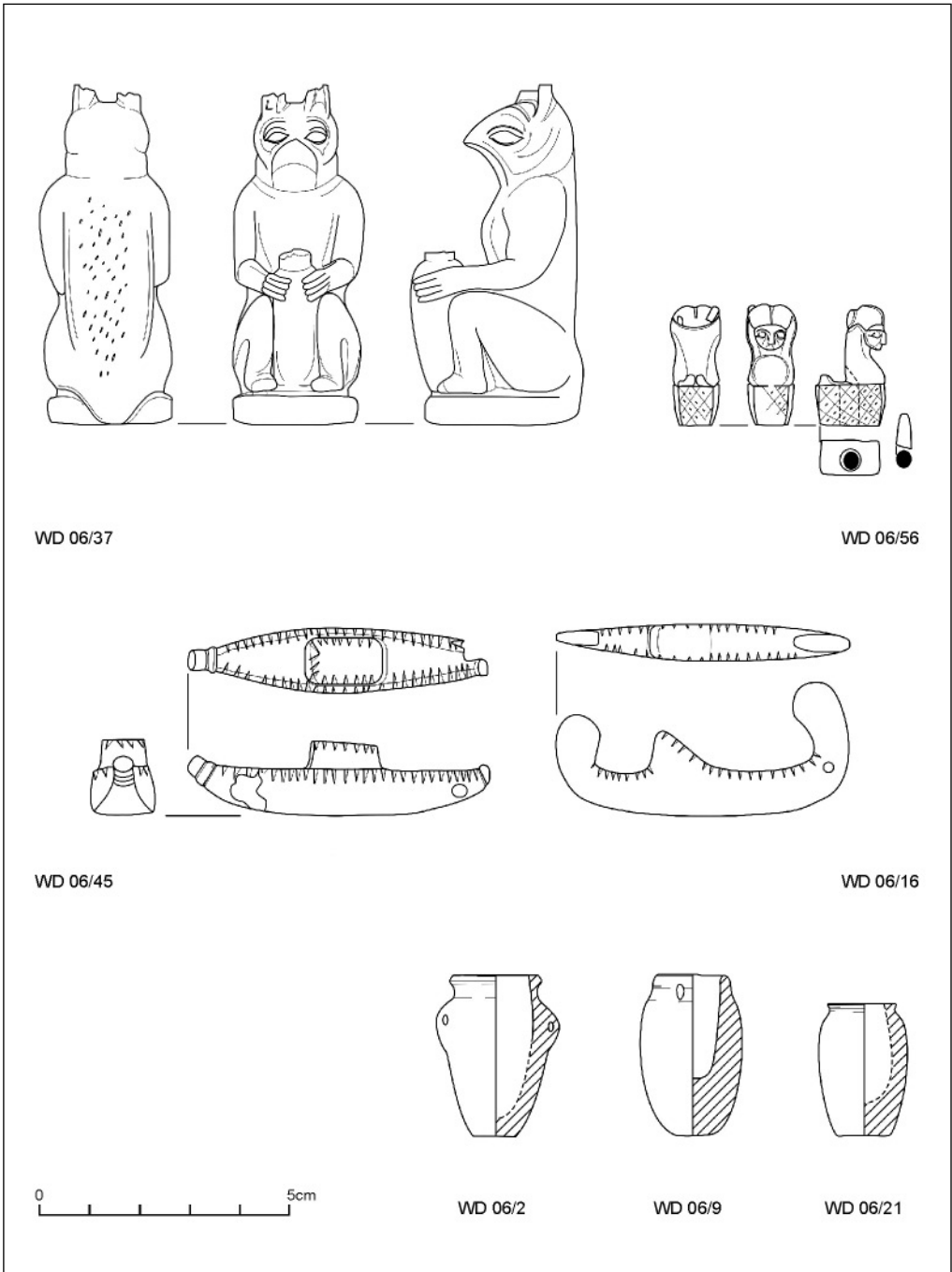


Fig. 6. *Figurines of fantastic creatures (top row), models of boats (middle row) and miniature vessels (Drawing A. Longa)*

I.H.1. Pebble-grinder and/or hammerstone. WD/06/5 (R-604)

Evident traces of use as a grinder and hammer. Natural agate. 4.2 x 2.4 x 1.6 cm

I.H.2. Cone, probably game piece.

WD/06/6 (R-605)

Light-green faience. H. 2.7 cm; Dia. 2.0 cm

I.H.3. Cone, probably game piece.

WD/06/7 (R-606)

Light-green faience. H. 2.5 cm; Dia. 1.7 cm

I.H.4. Game piece (?).

WD06/60 (R-659)

Conical object, narrowing toward the top, made of a tusk ending. Numerous losses, vertical and concentric cracks. Hippopotamus tusk. H. 5.3 cm; base dia. 2.7 cm

I.H.5. Bead.

WD/06/14 (R-613)

Limestone. L. 1.1 cm; Dia. 1.0 cm

I.H.6. Model of knife.

WD/06/15 (R-614)

Copper. L. 4.5 cm; W. 2.7 cm

I.H.7. Cylindrical seal.

WD/06/11 (R-610)

Very shallow engraving and hieroglyphic signs probably without any meaning, suggesting a model instead of a real cylindrical seal. Light-green faience. H. 3.7 cm; Dia. 2.0 cm

I.H.8. Model of "papyrus" boat.

WD06/45 (R-644) [*Fig. 6*]

Arched prow, cubic cabin set in the middle of the deck. Carved lines along both boards and on the cabin. Stern pierced with a hole (Dia. 0.2 cm), probably for attachment. Lengthwise crack, missing fragments of the stem and deck in the prow part. Hippopotamus tusk. 6.1 x 1.3 x 1.3 cm

I.H.9. Model of "Mesopotamian" boat.

WD/06/16 (R-615) [*Fig. 6*]

High stem and stern, cabin set in the middle. Hole (?) in the stem is probably for suspending the model (as an amulet?). The

almost triangular cabin is possibly a very schematic representation of a light, reed construction. Multiple small incisions along both sides, perhaps representing oars. Hippopotamus tusk. L. 6.1 cm; H. 2.5 cm

I.H.10. Model (!) of *Aspatharia* shell.

WD/06/17 (R-616)

Hippopotamus tusk. L. 7.6 cm; W. 4.4 cm

I.H.11. Model of unidentified object.

WD/06/19 (R-618)

Rectangular plaque with extended corners, pierced in the corners and in the middle. Both sides decorated with shallow zigzags. Model of a hearse, bed, animal skin or part of a box. Hippopotamus tusk. 5.1 x 3.5 x 0.6 cm

I.H.12. Part of box (?).

WD/06/23 (R-622)

Rectangular plate with two edges visibly curved. Shallow groove running along the length of one edge. Hippopotamus tusk. 5.1 x 4.1 x 0.3 cm

I.H.13. Lid of miniature box.

WD06/38 (R-637)

Horizontally pierced handle. Numerous cracks and losses on both sides, fragment of edge missing. Hippopotamus tusk. 5.2 x 3.8 cm

I.H.14. Model of mirror or spoon (?).

WD06/46 (R-645)

Object composed of handle and flat, nearly round "mirror". Oblong handle decorated with a net pattern of grooves and incisions. "Mirror" flat on one side and convex on the other. The flat side undecorated, the other side covered with deep round holes (Dia. 0.1 cm). Two bigger holes (0.4 cm) pierced in the upper part. Many cracks, small fragments missing. Hippopotamus tusk. L. 7.8 cm

I.H.15. Palette or boat model (?)

WD06/50 (R-649)

Almost square object with two arched edgings in the upper part. Hippopotamus tusk. 2.4 x 4.6 x 1.5 cm

I.H.16. Bone slab.

WD06/58 (R-657)

Cuboid object. Upper surface appears to be slightly concave or narrowed; no apparent decoration. Edges dressed. Surface cracked with many losses on both sides. Hippopotamus tusk. 7.0 x 1.5 x 0.7 cm

I.H.17. Model of granary (?)

WD06/61 (R-660)

Conical object narrowing toward the top, made of a tusk ending. Egg-shaped hole bored through the upper part. Multiple surface losses, vertical and concentric delamination. Hippopotamus tusk. 3.6 x 3.1 x 1.6 cm

I.J.1. Miniature jar.

WD/06/1 (R-600)

Wavy handles. Calcite. H. 2.4 cm; Dia. 1.5 cm

I.J.2. Miniature jar.

WD/06/2 (R-601) [Fig. 6]

Lug-handles. Basalt? H. 3.2 cm; Dia. 2.0 cm

I.J.3. Miniature bowl.

WD/06/3 (R-602)

Porphyry or diorite? H. 1.6 cm; Dia. 4.8 cm

I.J.4. Miniature flask.

WD/06/4 (R-603)

Lug-handles. Stone. H. 4.2 cm; 3.8 x 1.8 cm

I.J.5. Miniature jar.

WD/06/8 (R-607)

Cylindrical, vertically pierced handles. Light-green faience. H. 5.4 cm; Dia. 2.1 cm

I.J.6. Miniature jar.

WD/06/9 (R-608) [Fig. 6]

Upper part lost, possibly cylindrical. Calcite. H. 3.2 cm; Dia. 2.1 cm

I.J.7. Miniature bowl (?).

WD/06/12 (R-611)

Poorly preserved. Calcite. H. 1.9 cm; Dia. 1.9 cm

I.J.8. Miniature jar.

WD/06/13 (R-612)

Poorly preserved. Calcite. H. 2.8 cm; Dia. 2.6 cm

I.J.9. Miniature jar.

WD/06/18 (R-617)

Cylindrical, schematic cord ornament beneath rim. Part of rim missing. Hippopotamus tusk. H. 6.0 cm; Dia. 2.5 cm

I.J.10. Model of vessel (beer jar?).

WD/06/21 (R-620) [Fig. 6]

Hippopotamus tusk. H. 2.7 cm; Dia. 1.7 cm

I.J.11. Model of bowl.

WD06/59 (R-658)

Numerous losses on the rim, surface cracked. Hippopotamus tusk. H. 1.2 cm; rim dia. 3.0 cm; bottom dia. 1.7 cm

II. OBJECTS

FOUND AROUND THE JAR

II.1. Female dwarf.

W06/8 (R-666)

Standing figure in long robe, legs bent, knees, feet together. Relatively short arms straight by the sides. Long hair parted in the middle of disproportionately large head, reaching to the middle of the back. Face severely damaged, bearing traces of plastic modeling: large, almond-shaped eyes, small nose and narrow down-turned lips. Round base (Dia. 0.8 cm), narrowing toward the bottom, hole in the underside (Dia. 0.3 cm). Poorly preserved, left arm missing; major surface losses, heavy encrustation. Hippopotamus tusk. H. 4.7 cm (including base 1.1 cm)

II.2. Woman.

W06/7 (R-665)

Standing naked woman. Right hand by the side, left one bent at the elbow, supporting the breasts. Buttocks and womb modeled plastically. Hair reaching the shoulders at the back. Missing legs and left arm, face completely effaced.

Numerous losses, surface heavily encrusted. Hippopotamus tusk. H. 3.0 cm

II.3. Model of chair/bed leg.

W06/5 (R-663)

Shaped like a bovine leg with relatively high and horizontally notched "hoof". Top flat with asymmetric hole presumably for attachment to the chair/bed frame. Well preserved, heavily encrusted. Hippopotamus tusk. H. 3.8 cm

II.4. Box lid.

W06/6 (R-664)

Damaged surface. Hippopotamus tusk. 4.8 x 2.7 x 1 cm

II.5. Faience slab.

W06/4 (R-662)

Cuboid shape with holes bored obliquely in the shorter sides. Plaited band decorating one of the longer sides. Found in one of the stone vessels discovered in the vicinity of the deposit. Faience. 7.7 x 1.0 x 0.9 cm

PRELIMINARY INTERPRETATION

Prior to the discoveries at Tell el-Farkha, the only known deposits from the Delta area were those from Tell Ibrahim Awad (Van Haarlem 1995: 45-52; 1996: 31-34; Belova, Sherkova 2002). In quality and variety, these deposits do not give way to such sets from Upper Egypt, from Hierakonpolis (Quibell, Petrie 1900), Abydos (Petrie 1902; 1903; Kemp 1968: 138-55) and Elephantine (Dreyer 1986). The latter deposits are better researched, although the most famous deposit from Hierakonpolis is still under study (Whitehouse 2002: 425-446; 2004: 1115-1142).

Most of the objects from the Tell el-Farkha deposit were not meant to stand independently. The wedge-shaped bottom of a number of the figurines probably facilitated their placement in specially prepared holes in a larger base or even

straight in sand or mud. Those with small round, oval or quadrangular bases had relatively deep holes drilled in their underside for mounting on bone or wooden pegs (cf. I.G.2). A few were pierced with holes for suspension or for nailing to a flat surface.

The Tell el-Farkha deposit merits attention for its variety from both the stylistic and the formal point of view. While the first impression was that the figurines would easily find counterparts in previously discovered sets, a more detailed examination proved that many types had been absent hitherto from Egyptian art and in the case of others the similarity was only superficial. Moreover, it is puzzling that types already known from the first Farkha deposit, i.e., baboons, prostrate captive, standing man made of clay and rattles, did not appear in the second one.

Nude female representations are numerous in Pre- and Early Dynastic art. They first appeared in Badari culture (Brunton, Caton-Thompson 1928: Pl. XXIV,2), gaining in popularity during Naqada I. A typical example is British Museum figurine EA 32 141, small (11.4 cm) with disproportionately large eyes inlaid with lapis-lazuli, shown standing with hands cupped under the breasts (Donadoni Roveri, Tiradritti 1998: 31). Figurines of this kind remained popular in the Proto- and Early Dynastic period, e.g. a nude representation of a woman with hands by the side, from the Early Dynastic deposit from Tell Ibrahim Awad (Belova, Sherkova 2002: Fig. 55), a few examples from the Main Deposit from Hierakonpolis and a figurine from the Petrie Museum, 20 cm high, made of ivory, reconstructed as cupping her breasts with her left hand (Adams 1974: 360). The right hand of this figurine with its finely shaped fingers has been preserved

separately. The distinctively modeled face with almond-shaped eyes, relatively wide nose and thick lips draws attention, as does the waist-long hair or wig with the locks engraved as horizontal lines, very much like the two found at Tell el-Farkha (I.A.1, II.2). As for the Hierakonpolis deposit, the majority of naked female figurines has an identical arrangement of the arms as in the Farkha set (Capart 1905: Figs 132-133).

Three of the figures from Elephantine are depicted holding in their hands an object of some kind. One is a man pressing a round bread (?) to his chest, the second, partly preserved, shows a woman with a vessel on her head, and the third, also incomplete, is a sitting figure holding a large vessel in front of it (Dreyer 1986: 101; El.K. 999, 1499, 967). The latter type is also represented by a standing female figure from Tell Ibrahim Awad (Belova, Sherkova 2002: Fig. 104), dressed in a long robe, her hair falling to the shoulders and a jar in her hands. Another figure from the same site, this time of faience, depicts a sitting baboon holding a jar (Belova, Sherkova 2002: Fig. 72). A monkey figure from Abydos also represents the type (Schlögl 1978: 25). None of these examples are an exact counterpart for our woman with a bowl (I.A-2) or the sitting falcon-headed figure offering a jar (I.G.1), but they prove that the iconographic type was known in both Upper and Lower Egypt.

The same concerns representations of women carrying or holding children. From Elephantine there is a partly preserved figure of a woman carrying a child on her back and two other figures of standing women holding two children each in their arms (Dreyer 1986: 103; El.K. 1444, 1022, 1009). Unprovenanced images of mothers and children are kept in London (B.M. 32143) and Berlin (14.441): a woman in a long robe and the child on

her back in the first case, and a naked woman carrying a child on her hip in the second (Capart 1905: 168-169). In this context, the figurine from Tell el-Farkha (I.A-4) is nothing extraordinary, although it shows a novel approach to the theme.

The figure of a woman with a child on her knees, sitting in a basket-like container which is probably a kind of litter (I.A-5), is another matter altogether. It finds parallels elsewhere, the most popular relief representations of figures in litters being carved on the maceheads of Scorpion and Narmer (Ciałowicz 2001: 197ff.). Covered litters are also known from sculpture (Belova, Sherkova 2002: Fig. 49; Schlögl 1978: 26-27). Consequently, there are grounds to interpret the Tell el-Farkha piece as somehow related to the *reput*, the pharaoh's mother (Kaiser 1983: 262) or, in a broader sense, women from the royal family (Millet 1990: 53-59).

The striding man from Tell el-Farkha (I.B-2) was probably wearing a penis-sheath (unpreserved). Similar, but not identical figurines are known from the Naqada I period, most of them, like the famous figure of Mahasna, with legs joined and arms by the sides. Characteristically, the ears were marked without exaggeration. Similar figures are known from Hierakonpolis (Quibell, Petrie 1900: Pl. VII), as well as a partly preserved faience figure from Elephantine with the arms arranged in a similar way as in the Farkha figure (Dreyer 1986: 99; EL.K. 747).

The man wrapped in a cloak from Tell el-Farkha (I.B-1) has no direct counterpart. The figure from Abydos, British Museum 37 996 (Petrie 1903: 24, Pl. II,3), is very similar with the hand appearing from under the folds of the cloak. The ornamental character of this cloak draws attention and the Upper Egyptian crown on the head facilitates the identification of

this figure as one of the early rulers shown during a *sed* jubilee. In early Egyptian art, the decorated cloak is reserved for rulers (i.e., statues of Ninetjer, Khasekhem and Djoser), the hand in these cases holding royal insignia. The hand of the Tell el-Farkha figure could have once held a *beka*-scepter. The absence of a crown is not conclusive as the heb-*sed* representations of Niuserre showed him in nothing but an apron and headscarf (Kaiser 1971: 87-105), indicating that early rulers could be depicted without a crown. Consequently, it can be assumed that the figure from Tell el-Farkha represented an anonymous ruler during his *sed* jubilee.

One of the best known representations of prostrate captives in Egyptian art comes from the set found at Tell el-Farkha in 2001 (Chłodnicki, Ciałowicz 2002a: Pl. IX,2). Similar images, although of worse workmanship, are known from Tell Ibrahim Awad and Abydos (Belova, Sherkova 2002: Fig. 39; Schlögl 1978: 28), but none is a direct analogy for the figures of captive figures discovered in the last season (I.D.1-2). The theme was common in Pre- and Early Dynastic art. The best examples are the expressive figurines from Hierakonpolis (Quibell, Petrie 1900: Pls XI-XII). Representations of conquered enemies are known also from Abydos (Schlögl 1978: 29) and Tell Ibrahim Awad, where the so-called idol is doubtlessly a very schematic representation of a captive with his arms bent at the elbows and bound (Belova, Sherkova 2002: Fig. 106). The dwarf figures from Tell el-Farkha (I.C.1-9; II.1) are apparently the most numerous set ever discovered in Egypt. They are unmatched for the workmanship of most, the realism in depicting body deformation and facial expression. The oldest known are the naked female figures from the former MacGregor collection

(Navelle 1900: Pls IV-V), representing bald-headed and large-eyed women with deformed bodies, short arms and bandy legs. A faience figurine from Elephantine is also considered a dwarf because of disproportionately short legs and large head (Dreyer 1986: 99, El.K. 1024). Regarded as dwarves are two figurines from Hierakonpolis (Quibell, Petrie 1900: Pls XI, XVIII). The first, of bone, is a naked, bandy-legged woman with big belly and sagging breasts, her hands pressed to her belly, a heavy wig reaching down to the middle of the back. The other figure, made of limestone, featured short, thin and bandy legs, weak arms and a large head. Two figures from Tell Ibrahim Awad, both of ivory, can be treated as representations of dwarves (Belova, Sherkova 2002: Figs 100-102). One appears to have been sitting with knees drawn up and one hand resting on the preserved knee. The body proportions do not suggest a dwarf, but the slightly grotesque cast of the features justifies the opinion. A conclusive identification of dwarf figures from the Tell Ibrahim Awad set will be possible after a better publication is made available. A figure of black steatite, apparently from one of the graves at Abusir el-Meleq, is unquestionably a representation of a dwarf, female according to Vandier (1952: 464), but possibly male judging by the short hair and the waistband worn by this schematically modeled figure with bent knees and arms crossed on the chest.

A few dozen figures depicting children with a finger to the lips come from Elephantine, but they are mostly standing, a type unknown from Tell el-Farkha. There is also a dozen or so figures, mostly of faience, representing naked boys (sometimes in a loincloth) sitting on the ground with their knees drawn up, a finger

of the right hand to their lips, the left hand resting on the knee. Similar figures are known from other sites, too (Belova, Sherkova 2002: Fig. 38), including some true masterpieces of art - the stone figures from Abydos (Needler 1984: 347) and the figure from the Kofler-Truniger collection (Schlögl 1978: 28). The latter, in particular, is comparable artistically to the finds from Tell el-Farkha (I.E.1-2).

None of the fantastic creatures or cobra-uraeus figures from Tell el-Farkha (I.F.6-9) find counterparts among hitherto discovered objects of the minor arts. The figure of a falcon-headed feline (?) (I.G.1), by far the most interesting in this group, has yet to be fully interpreted. Griffins with a lion's or panther's body, bird's head and wings appear among late Predynastic reliefs from the Main Deposit in Hierakonpolis (Ciałowicz 1999: Fig. 189) and recently on a dagger handle from grave U-127 (Dreyer 1999: 209). It is similarly difficult to assess how closely the small figure of a woman-faced snake (I.G.2) is connected with the goddess Wadjet. The interpretation is additionally handicapped by the decorated base: can it be a neb-basket? Cobras-uraeus are a characteristic element of Pharaonic crowns since the reign of Den and there is little doubt that they drew upon Lower Egypt's guardian of a divine king. Meanwhile, the cobras from Tell el-Farkha (earlier than Den's reign) were probably attached to something and were part of a bigger whole (royal crowns, sculptures depicting rulers?), as suggested by the holes in their tail ends.

Animal figures (lions, dogs, scorpions, fish, falcons) are known mostly from Hierakonpolis, although they are present also on other sites, i.e., Abydos, Elephantine, Saqqara and Tell Ibrahim Awad, and a significant, but unprovenanced and hence not well dated group

comes from various museum collections. They were made of various materials: clay, faience, bone and stone. The details and workmanship differ from the Tell el-Farkha figures (I.F.1-12), but it seems likely that the craftsman's goal was depicting a certain species rather than a standardized rendering of stylistic features. Moreover, this diversity is excellent proof that the art of the period was neither monotonous nor schematic.

Elephantine has yielded two models of sickle-like papyrus boats, one of stone and the other of faience (Dreyer 1986: 121-122). Models of boats made of faience and ivory are known also from Tell Ibrahim Awad (Belova, Sherkova 2002: 172, Figs 41, 50). Most of the illustrated examples from this site are papyrus boats, but at least one had a high stern and prow, like the Tell el-Farkha pieces (I.H.8-9), indicating that both types were present among votive objects from Pre- and Early Dynastic Egypt.

Granary models from Elephantine, one of faience, the other of bone (Dreyer 1986: 122) are somewhat similar in shape and size to the object found in Tell el-Farkha (I.H.17). Similar game-pieces are also known from Tell Ibrahim Awad (Belova, Sherkova 2002: Fig. 11). Two miniature models of vessels in faience and stone have been recorded at Elephantine, as well as game-pieces, mostly of conical form, made of the same materials (Dreyer 1986: 123ff.). The Elephantine deposit also included numerous beads of different shape, mainly of faience but also of gold and carnelian (Dreyer 1986: 129ff.). Similarly in Tell el-Farkha, many beads of semi-precious stones were recovered from the same place as the deposit.

Hitherto discovered deposits of a similar nature are not dated precisely, containing as a rule objects later than the Proto- and Early

Dynastic times – from the Fourth Dynasty or even the end of the First Intermediate Period. The deposit found in 2006 in Tell el-Farkha cannot be later than Dynasty 0 and I, as suggested by pottery datings for the abandonment of this part of the site no

later than the middle of Dynasty I. This deposit also seems more homogenous than the one discovered earlier, in 2001, which appears to have contained a few objects of earlier date than the end of Dynasty 0 and beginning of Dynasty I.

CENTRAL KOM

Work on the Central Kom concentrated on completing the exploration of mud-brick constructions revealed in 2005 (690 m² of excavated area). Eight successive layers were explored: nos 51-58: 450-410 a.s.l. in the main trench and nos 44-52; 465-425 a.s.l. in the slope trench, ending on early Naqada IIIa – late Naqada IIb levels.

As in the higher layers, the architecture was found to develop on both sides of a thick wall running NE-SW. The buildings were arranged around two courtyards. They consisted of oblong rooms up to 3.50 m wide and almost 10 m long, with smaller rooms less than 2 by 2 m in also being present. Remnants of kilns

and hearths were registered inside the buildings and courtyards. The northern part of the main trench, west of the thick wall, was free of any archaeological features.

In the slope trench, a mud-brick wall 1.50 m thick was discovered to run NW-SE, that is, perpendicularly to the other main walls here. At the edge of the tell, this wall was destroyed in Old Kingdom times. At the opposite end, it disappears into the trench wall and does not reappear in the main trench, which may indicate that it turns somewhere along the way. It is possible that this was a curtain wall surrounding the settlement.

EASTERN KOM

Exploration continued of the Naqada III A-B settlement investigated in 2004-2005 in the northwestern part of the trench. The general layout of the walls followed a N-S and E-W orientation with a slight deflection, forming more or less rectangular habitations. The architecture revealed nothing notable until level 29 when a regular configuration of habitations was recorded (rooms 131, 211, 212 and 186). The thickness of the walls (more than a meter wide) combined with the specific brick bond suggested a building complex of different function and importance. The

remaining architecture did not depart from a pattern already established for the area: severe damages caused by later pits demonstrating extended and intense human activity. Hearths and ash deposits were frequent, occasionally including ceramic jars.

An unprecedented discovery was made in a small room (no. 205) which consisted of three walls with the south side left open. A stove with pot occupied a place inside this unit and in the southeastern corner, by the north wall, in a layer suggesting that the wall was already ruined at this time

(level 30, 4.50 m. a.s.l.), a hoard was found. The objects lay next to one another, two large flint knives of a ritual character immediately next to the wall and beside them remnants of two crushed golden figures (Chłodnicki, Ciałowicz 2007a). A scattering of stone beads lay between the neck and waist of the bigger of the two figures. The actual hoarding of these objects, which were obviously in secondary context here, must have taken place about 3150 BC, that is, during the formative stages of the Pharaohs' state. The objects were concealed either for protection against a raiding enemy or as loot brought by an inhabitant of Tell el-Farkha from another town. Whatever the case, they were obviously never retrieved.

Altogether 96 pieces of thin golden sheet and 140 golden rivets from the two crushed figures were collected and reconstructed in the field.³ The core of the statuettes must have been made of a perishable material (probably wood) which has not been preserved. It was then covered with thin sheets of gold attached with golden rivets, each 4 mm long and 1 mm in diameter. The workmanship of these rivets testifies to the skill of contemporary goldsmiths.

The figures represented standing men, one c. 0.60 m high, the other c. 0.30 m [Fig. 10]. The overall style of the figures, as well as features like the large, sticking-out ears, unnaturally big phalluses, and well-fashioned fingers and toes, fit well into the art of Pre- and Early Dynastic Egypt. The eyes of both statues were made of lapis-lazuli and the eyebrows were also inlaid with a material other than gold, possibly bitumen or ebony. They are believed to represent an early ruler and his son and heir. None other of such precious materials are known so far from early Egypt.

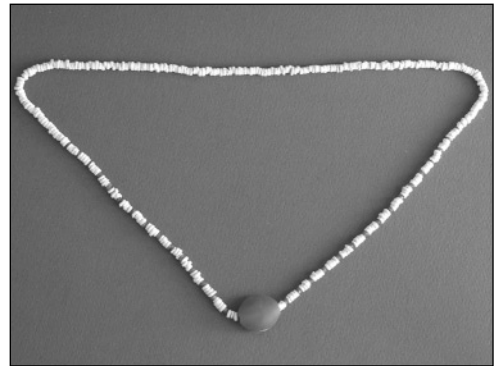


Fig. 7. *Necklace of stone beads*
(Photo K. Kowalski)

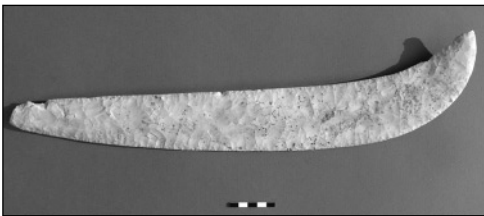


Fig. 8. *Bifacial knife*
(Photo R. Słaboński)

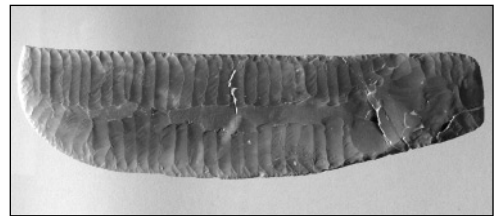


Fig. 9. *Ripple flake knife*
(Photo R. Słaboński)

3 The preliminary reconstruction in the field was made by Anna Longa. The pieces were sent to the Egyptian Museum in Cairo for full conservation.

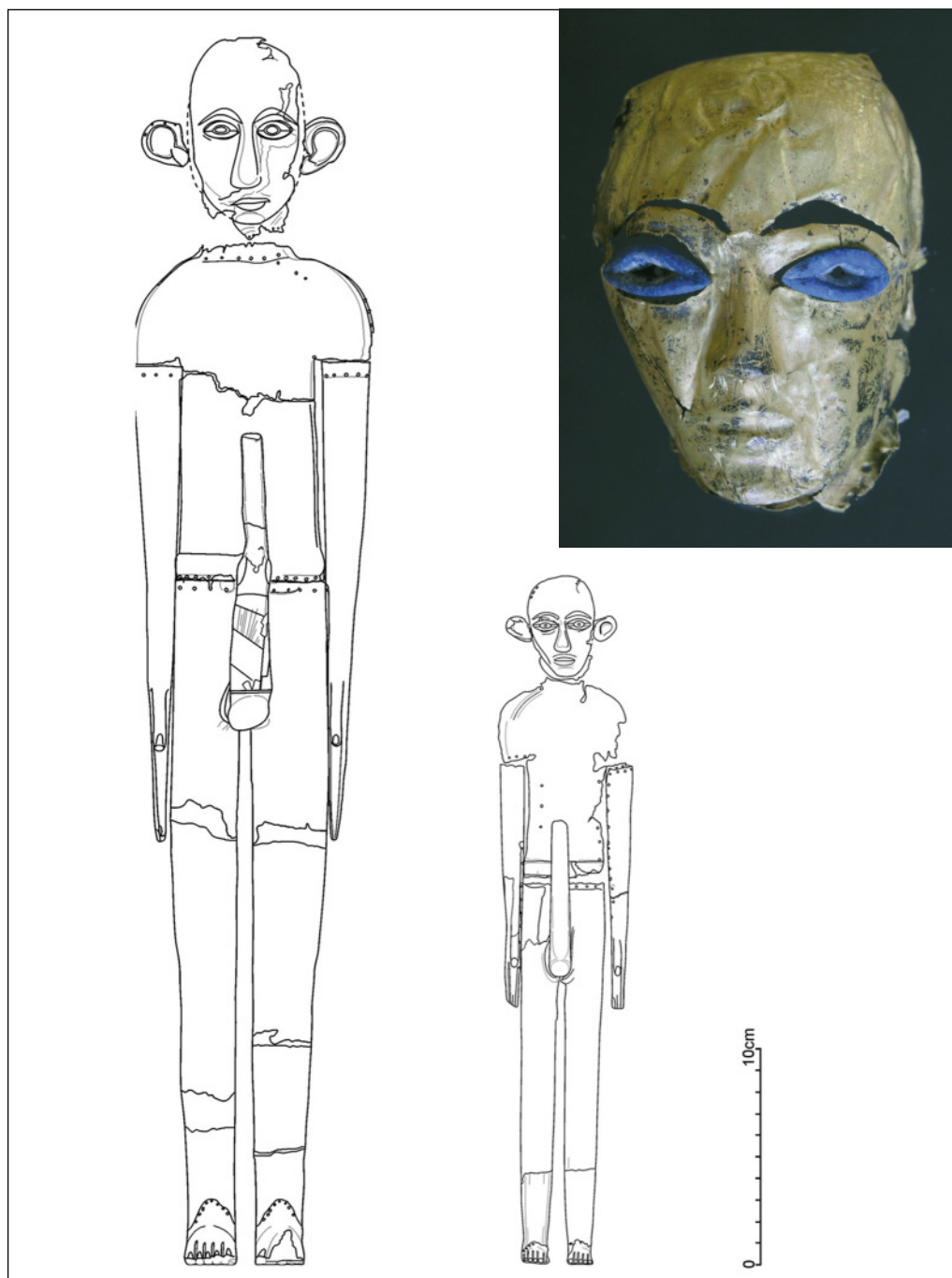


Fig. 10. Golden figurines from the Eastern Kom and head of smaller golden figurine
(Drawing A. Longa; photo R. Staboński)



Fig. 11. Grave no. 9 from the Early Dynastic period (Photo K. Tatoń)

The bigger figure (or both perhaps) was decorated with strings of flat round beads, altogether 326 made of ostrich eggshells (Dia. 3-4 mm, 1 mm thick) and 55 of carnelian (Dia. 2.5 mm, 2 mm thick), with one big oval bead made of red quartz (Dia. 16.5 mm, L. 18 mm; Fig. 7).

The longer of the ceremonial knives was 51.5 cm long; it was 7.5 cm wide and 1.4 cm thick. Made of pale grey flint, it was covered on both sides with irregular retouch [Fig. 8]. The shorter one, a ripple flake knife of brown flint 30.5 cm long, was 8.3 cm wide and 0.9 cm thick. It features a surface retouch only on one side, but was polished on both sides [Fig. 9].

The two types have been recorded already in Nagada II times (Ciałowicz 1999: 132-133), hence they may be earlier than the Nagada IIIB context in which the hoard was found.

SOUTHERN PART OF THE KOM

An extension of the trench to the east in the southern part of the excavated area was necessitated by the collapsing baulk. The newly explored area covered 3 a. A poor settlement from the beginning of the Old Kingdom, as well as 22 graves from various periods were found.

A poorly made and badly preserved set of rooms presumably forming a house was cleared, revealing a few stone vessels in the accompanying fill. One of these concealed a small cylindrical jar made from a hippopotamus tusk. Other finds included potsherds and a few intact pots, flint sickle blades and two big querns.

Of the graves only two, dated to the Early Dynastic Period, were better equipped. Grave no. 9 [Fig. 11] was lined with mud brick and topped with a mud-brick superstructure (4.13 x 2.18 x 2.36 m). The skeleton was of a male, 40-50 years old, buried in contracted position, head to the north and facing east. The equipment consisted of 27 pottery vessels (three wine jars, four smaller jars, nine cylindrical jars, six bowls, a miniature vessel), two geometric palettes of grey-wacke, basalt bowl, alabaster bowl, bone spoon, 53 carnelian beads (found on the right wrist and hip), one faience bead, fragments of ochre. The chamber was covered with a well preserved mat. A *serekb* of Narmer found on the biggest wine jar dates this grave.

As for grave no. 50 (4.92 x 2.36 x 2.40 m) [Fig. 12], it was composed of two chambers lined with mud brick and

topped with a mud-brick superstructure. The burial was also of a male, the skeleton lying on its left side, contracted, head to north and facing east. The equipment included 37 pottery vessels (35 medium size jars and two bowls) and 11 alabaster vessels (big dish, one big and two small cylinder-shaped pots, small bowl, small jar, three miniature jars, two flat jars), fragment of a basalt bowl, clay seal with cylindrical seal impression and a fragment of another, fragment of rattle, faience bead, fragment of unidentified object of faience, clay token, five clay models of granaries. Most of the grave goods were found in the southern chamber. The pottery jars were deposited along the southern wall and the stone vessels in the northeastern corner. The biggest dish was found by the east wall of the northern chamber, on top of a small pottery jar and bowl. The granary

models were found in the superstructure. The grave can be dated to the second half of Dynasty I.

Three other poorly preserved and equipped graves should be dated to the end of the Early Dynastic Period. They were simple grave pits, containing in one case a multiple burial of three adults

The remaining 17 graves, all of them simple pits, were connected with the beginning of the Old Kingdom (probably the end of Dynasty III). Four were of adult males with one (no. 16) containing a richer set of equipment consisting of two flint sickle blades, corn grains, two clay tokens, faience bead and fragment of clay seal with cylindrical seal impression. The remaining burials were mainly of infants and contained no grave goods except for an alabaster vessel in one case and a fragment of clay seal in another.



Fig. 12. Grave no. 50 from the Early Dynastic period
(Photo K. Tatoń)

REFERENCES

- Adams, B.
1974 *Ancient Hierakonpolis*, Warminster
- Belova, G.A., Sherkova, T.A.
2002 *Ancient Egyptian Temple at Tell Ibrahim Awad: Excavations and Discoveries in the Nile Delta*, Moscow
- Brunton, G., Caton-Thompson, G.
1928 *The Badari Civilisation and Predynastic Remains near Badari*, London
- Capart, J.
1905 *Primitive Art in Egypt*, London
- Chłodnicki, M., Ciałowicz, K.M.
2002a Polish excavations at Tell el-Farkha (Ghazala) in the Nile Delta. Preliminary report 1998-2001, *Archeologia* LIII, 63-118
2002b Tell el-Farkha (Ghazala). Season 2001, *PAM* XIII [=Reports 2001], 105-126
2007a Golden figures from Tell el-Farkha, *Studies in Ancient Art and Civilisation* 10, 7-21
2007b Tell el-Farkha (Ghazala). Season 2005, *PAM* XVII [=Reports 2005], 143-154
- Ciałowicz, K.M.
1999 *Początki cywilizacji egipskiej*, Warszawa-Kraków
2001 *La naissance d'un royaume. L'Égypte des la période prédynastique a la fin de la 1^{ère} dynastie*, Kraków
- Donadoni Roveri, A.M., Tiradritti, E.
1998 *Kemet. Alle sorgenti del tempo*, Milano
- Dreyer, G.
1986 *Der Tempel der Satet. Die Funde der Frühzeit und des Alten Reiches, Elephantine VIII*, Mainz
1999 *Motive und Datierung der dekorierten prädynastischen Messergriffe, L'art de l'Ancient Empire égyptien*, Paris
- Kaiser, W.
1971 Die kleine Hebseddarstellung im Sonnenheiligtum des Neuserre [in:] *Aufsätze zum 70. Geburtstag von Herbert Ricke, Beiträge zur ägyptischen Bauforschung und Altertumskunde in Kairo* 12, Wiesbaden, 87-105
1983 Zu den $\overline{\text{f}}$ = $\overline{\text{m}}$ der älteren Bilddarstellungen und der Bedeutung von rpw.t, *MDAIK* 39, 261-296
- Kemp, B.J.
1968 The Osiris temple at Abydos, *MDAIK* 23, 138-155
- Millet, N.B.
1990 The Narmer mace-head and related objects, *JARCE* 27, 53-59
- Naville, H.E.
1900 Figurines égyptiennes de l'époque archaïque, *Recueil de Travaux* 22
- Needler, W.
1984 *Predynastic and Archaic Egypt in the Brooklyn Museum*, New York

Petrie, W.M.F.

1902 *Abydos* I, London

1903 *Abydos* II, London

Quibell, J. E., Petrie, W.M.F.

1900 *Hierakonpolis* I, London

Schlögl H.

1978 Le préhistoire et la protohistoire [in:] H. Schlögl (ed.), *Le don du Nil. Art égyptien dans les collections suisse*, Bâle

Van Haarlem, W.M.

1995 Temple deposit at Tell Ibrahim Awad – a preliminary report, *GM* 148, 45-52

1996 Temple deposit at Tell Ibrahim Awad – an update, *GM* 154, 31-34

Vandier, J.

1952 *Manuel d'archéologie Égyptienne* I, Paris

Whitehouse, H.

2002 A decorated knife-handle from the “Main Deposit” at Hierakonpolis, *MDAIK* 58, 425-446

2003 Further excavation amongst the Hierakonpolis ivories [in:] S. Hendrickx, R.F. Friedman, K.M. Ciałowicz, M. Chłodnicki (eds), *Egypt at its Origins. Studies in Memory of Barbara Adams*, *OLA* 138, 1115-1142