

Kamil Nieścioruk

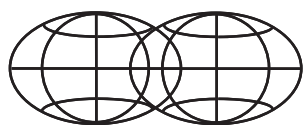
Cartographic source materials and cartographic method of research in the past environment analyses

Bulletin of Geography. Socio-Economic Series nr 22, 81-95

2013

Artykuł został opracowany do udostępnienia w internecie przez Muzeum Historii Polski w ramach prac podejmowanych na rzecz zapewnienia otwartego, powszechnego i trwałego dostępu do polskiego dorobku naukowego i kulturalnego. Artykuł jest umieszczony w kolekcji cyfrowej bazhum.muzhp.pl, gromadzącej zawartość polskich czasopism humanistycznych i społecznych.

Tekst jest udostępniony do wykorzystania w ramach dozwolonego użytku.



ISSN 1732-4254 quarterly

Cartographic source materials and cartographic method of research in the past environment analyses

Kamil Nieścioruk^{CDFMR}

University of Life Sciences, Department of Environmental Engineering and Geodesy, Leszczyńskiego 7, 20-069 Lublin, Poland; phone: +48 815 248 123, e-mail: kamil.niescioruk@up.lublin.pl, www.niescioruk.ppa.pl

Nieścioruk, K., 2013: Cartographic source materials and cartographic method of research in the past environment analyses. In: Szymańska, D. and Biegańska, J. editors, *Bulletin of Geography. Socio-economic Series*, No. 22, Toruń: Nicolaus Copernicus University Press, pp. 81–95. DOI: <http://dx.doi.org/10.2478/bog-2013-0033>

Abstract. The article reviews a methodology of using early maps and other cartographic materials in the past environment studies. The application of the cartographic method of research is presented on examples from different research fields, but cases from the Earth Science are analysed deeper – from hydrography, through geomorphology to many aspects of economic geography. What is broadly described is a detection of human interaction with the nature: all traces that are marked by settlement, land use, communication, etc. This paper shows that the past environment, with its ways of use and topology can be recreated using early maps. These materials help finding hidden marks from the past, saved in abandoned orchards, old roads composed into modern network, toponyms storing past spatial relations, etc. It is also shown that analyses of early maps have to be conveyed with great care and responsibility, especially when it comes to geometric properties of old cartographic materials. The Geographic Information System (GIS) is helpful in such a situation, but its use is more profound. In this paper GIS is described as a tool being a great step forward in the applications of cartographic method of research and many examples of such applications in the field of a landscape analyses are given – from simple yet informative numeric outcomes of research to 3D virtual creations of long-gone landscapes.

Article details:

Received: 26 March 2013

Revised: 19 August 2013

Accepted: 07 September 2013

Key words:

GIS, early maps,
landscape analyses, cartography,
environment changes.

© 2013 Nicolaus Copernicus University Press. All rights reserved.

Contents:

1. Introduction	82
2. Environment features analysed with early maps	83
3. Past spatial relation preserved with maps	85
4. Application of Geographic Information Systems in environmental change analyses using early maps	88
5. 3D visualisations and animations in GIS	89
6. Conclusions	90
References	91

1. Introduction

Maps are a source of information not only about a modern state and condition of the environment, but also about its past. Early maps contain various kinds of historical information and present it on many levels. The way they are read and the kind of information gleaned from them depends mainly on a reader's needs and scope. For historians, early maps contain data of a strict historical sense – they are additional materials supporting and supplementing texts, showing spatial relations, human activity in the past, etc. (Alexandrowicz, 2008; Skrycki, 2011). For environmental science researchers, early maps show the past state of both the natural and anthropogenic environment (Pearson, 2006; Gregory, Healey, 2007; Nasiłowska, 2008; Wolak, 2008). Last, but not least, they are evidence of map-making science and technology, as well as being a part of the heritage for cartographers that are interested in methods of maps production and their geometric qualities (Beineke, 2001; Gaspar, 2010; Nieścioruk, 2011a). All these aspects are important and none can be omitted when using early maps in research if one aims to understand a map well and obtain proper conclusions. A comprehensive approach is highly advised, with a sensible shift towards a main area of examination. For example, the cartographer's methodology and land cover classification usage needs to be understood in order to convey the historical land use research right and properly judge the author's goals (Nieścioruk, 2011a). No matter what research approach is used and what aspects are investigated, both source (early) and outcome (resulting) maps help to describe, analyse, study and understand natural and anthropogenic phenomena. The process is called the cartographic method of research (Saliszczew, 1998: 265) and is widely used in the field of the Earth Science including all environmental changes research.

This paper concentrates on the methodology of the past environment analysis. However, it is worth mentioning that early maps, being a great information source about the past, especially transmitting spatial and topological context absent in text-sour-

es, were not recently widely used (or not as widely as they could be) by historians (Alexandrowicz, 2008). In the last decade the extensive use of maps by historical geographers (as presented below) and rapid spread of popularity of GIS (Geographic Information Systems) has changed (and still changes) the situation among historians as well. They use for a greater effect maps as a way to communicate and present research results and information about the past as well as a source material. The first case is not only popular school history atlases, but also more scientific (but still popularising the subject among wider recipients) publications, being the result of cooperation between historians and cartographers (Wnuk et al., 2007). Even strictly scientific publications on history take advantage of maps as a medium to show results, analyse a topic and describe a spatial phenomena (Szady, 2010). The second case is application by historians (sometimes having history of cartography in their research scope) using maps as a source information of the same level as a text or even a primary one (Gregory, Southall, 2002: 120–121).

The aspect of analysing early maps stressed in this paper is using them by Earth scientists (for example geographers, environmentalist and ecologist) in a processes of research on both natural and human-changed landscape. Such researches are based mainly on a series of maps, while 'series' may refer even to as little as two. In such case, one just compares a past state with a current one, i.e. using a modern map. An ortophotography or a satellite imagery serves well here too. Of course the longer and/or the more denser a series is, the better. However, some additional remarks are needed. Maps should not be selected randomly (Plit, 2007: 199), as they should cover an examined area in approximately the same scale and with similar scope of information, at least in all aspects needed for the given research. It is a serious problem when conducting analyses dealing with the Polish environment – 19th century maps are of very different scales, contest, mathematical basis and quality, depending on an area and country occupying Polish territories during the over-century partition of Poland. Maps published after World War II are also not fully reliable due to censorship and political reasons.

2. Environment features analysed with early maps

Of the natural environment elements, hydrography and land cover (especially forests) are among the most widely-analysed. Landforms are examined also, but often in connection with hydrography (riverbeds and plains). Stand-alone geomorphological analyses refer to characteristic features, e.g. dunes or gullies and – when more complex – are performed with extensive use of GIS.

Hydrography is an element of the environment that seems to be easily examined. A water network can be simply compared and changes can be traced (Kozieł, 2010; Plit, 2010). Rivers are also being analysed in an aspect of their relation to other elements in very small (in a sense of area) scale, e.g. spring locations on a base of early maps (Gołaski, 2011). Superimposing two maps may give unreliable results however. The problem is already the mentioned mathematical base (map projection). Even georeferenced maps from the 19th century may be hard to compare in an aspect of hydrography, as rivers are twisting line elements, what makes it difficult to decide which meander change is the result of change in nature and which is just a lack of georeferencing control points. Analyses that are more complex include, for example, a comparison of density factor of rivers on different maps. Again, the scale has to be the same or closely similar and still there is a problem of generalisation level as well as presentation and classification methods used on each map, resulting in a slightly different image of river network (Dawidek, Turczyński, 2007: 181).

Cartography supports geomorphological analyses in river valleys in case of riverbed changes (Maruszczak, 1997). The past location of the river is often visible on topographic maps from pre-melioration and river engineering periods in the forms of oxbow lakes, abandoned meanders and meanders scars (Kowalik, Suchożębrski, 2011). Similar analyses may refer to open water body changes as well, e.g. morphology of a coastline, a shallow water area or estuaries (van der Wal, Pye, 2003).

Researches on small areas often combine a few factors besides hydrographic one – geomorphologic and anthropogenic, as changes in river network on limited (especially urbanised) territory, are always

a result of both human activity and natural conditions (Kociuba, 2003). A river network analyses are quite frequently accompanied by landforms studies (Maruszczak, 1997; Pradela, Solarski, 2010), but works concentrating on a geomorphology only are not rare, including cases of using both early maps alone and maps combined with a digital elevation model (Solarski, Pradela, 2010).

The other important environment feature analysed with series of cartographic materials is the land use and land cover. Due to a nature of maps and the process of generalisation it is not always easy as it can be in the case of previously mentioned water bodies. The generalisation of rivers is often mainly quantitative as some smaller meanders, lakes or streams are omitted. In the case of land use the generalisation can be to the same extent both qualitative and quantitative. Smaller fields may be joined together, small orchards may be removed, but also land use classes may be joined. ‘Crop fields’ and ‘meadows’ classes on one map may be turned into ‘agriculture areas’ on another one. This is the reason why land use analyses often take advantages of aerial photographs and satellite imagery, as they have no pre-classified categories. Such studies are, however, time limited – broad access to these images is possible for period after World War II, especially since 1990s, when it was not as restricted as before (Sanecki, 2006: 155). A longer, covering pre-war period time series analyses mix maps with images or rely on maps only.

Probably the most popular land use studies deal with general land use, combining built-up areas (residential and industrial), arable land, forest, communication, waters, etc. The territorial extent of areas being an object of interest differs significantly, from large, mainly rural regions (Bielecka, Ciołkosz, 2000; Skocki, 2001; Nasiłowska, 2008), with a domination in agriculture (Fig. 1) to smaller areas (van Eetwede, Antrop, 2004). Even tiny areas of local habitats, villages, hamlets and fields are being analysed using topographic maps, aerial images (Pabjanek, 1999), topographic or similar large- (Zachariasz, 2012) and medium-scale maps (Pearson, Collier, 2002) or cadastre maps (Wolak, 2008; Sobala, 2012). Urbanised areas of modern towns and agglomerations are also being selected as a research topic (Nowocień, 2011) as well as suburban agriculture areas, both past rural, incorporated into cities

(Nieścioruk, 2011b) and modern rural or semi-rural areas (Ichikawa et al., 2006). Some of such works concentrate on results shown on final maps only, others include quite complex statistics of change

(Nasiłowska, 2008). A group of researches combine land-use with extensive analyses of other environmental factors, for example hydrography (Hildebrandt-Radke, Przybycin, 2011).

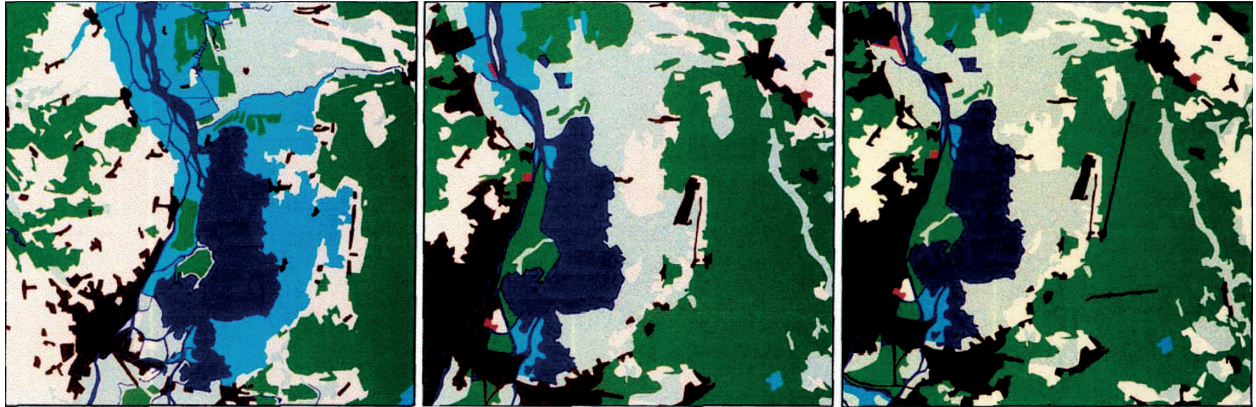


Fig. 1. Changes in land use in Szczecin (Poland) area (from left: second half of the 19th century, 1975, 1992), tones of grey represents different land use classes

Source: Bielecka, Ciołkosz, 2000: 101

Of one-category land use analyses, forest cover change detection is among most widely conducted. These areas are always depicted as an easily distinguished class on early maps (no matter how old), as forests are a significant and an important landscape element. Even early topographic maps show forest boundaries in a clear way, hence it is possi-

ble to combine maps to create a long time-series to analyse (Fig. 2). Such series usually consist of both maps and aerial/satellite imagery, as these images give more detailed and non-generalised information (Wilson, 2005). In case of about last 50 years many analyses rely on satellite imagery only (Krawczyk, 1993; Kozak, Troll 1994).

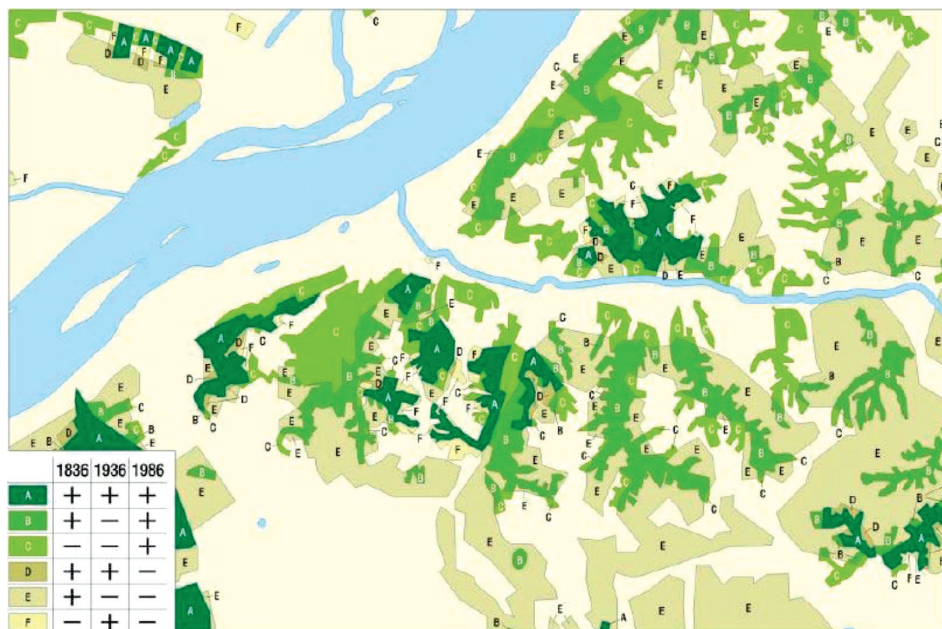


Fig. 2. Long time-series based on topographic maps in forest changes analyses (map of types, Kazimierz Dolny (Poland) area)

Source: Meksuła, 2001: 326

The above statement about exclusive satellite imagery use describes a tendency in changes analyses of many environment aspects in recent times: land use (Sochacka et al., 2008), land use in an industrial changed landscape (Szaryk, 1983), and changes in build-up areas (Szczypek, Wika, 1990; Nowakowska, 2008). Many detected changes are of an anthropogenic origin. The land use tends to differ over time as people deforest area to plough fields, turn swampy river valleys into meadows through melioration, plant new forest on abandoned fields, etc. Some changes are of more rapid and unplanned nature, e.g. in mining areas (Pradela, Solarski, 2010).

Urbanised areas are of course these where anthropogenic changes occur in high rates. They involve both urban-sprawl (new roads, including ring roads and new districts along them) as well as changes in long-established, relatively stable urban areas. Main factors causing natural and cultural landscape changes are man-associated: transport and its infrastructure, urbanisation and globalisation (van Eetvelde, Antrop, 2004: 80).

The latter change analyses are often parts of cartometry studies as stable, unchanged landmarks are a base of such (Benavides, Koster, 2006: 197; Nieścioruk, 2011a: 143). To define control (base) points, one needs to analyse an early plan and compare it with a contemporary environment and confront any possible changes with other materials, including texts, to ensure that the selected point is really stable – it has not changed and what is shown on a map is what exists in a modern space.

3. Past spatial relation preserved with maps

Changes are a documentation of our environment history. Early maps can be used to ‘time-travel’, in discovering the past and comparing it with a modern situation. As shown above, such studies are popular and they allow an evaluation of the environment change, human pressure, development of urbanised areas, shifts in land-use proportion, etc. Hence early maps and results of analyses based on them are important factors in environment sciences. Most of the changes leave some artefacts of the past, as none of them totally recreates a landscape. One

can discover some of these remains with ease, based on photographs or on our common society-shared memories (old building preserved in modernised district, monuments of architecture, communication tracks, etc.). Some are more hidden, however, and stay secret for one using only non-spatial materials, especially if they deal with objects of different kinds than easily-noticed buildings. Maps show their unique character here as they preserve spatial relation between objects, not their look. Early maps confronted with a modern space can serve as a tool to restore past relations and, above all, discover if any of these relations are still vital and visible and if they shape a landscape until now.

Good examples of such less typical features from the past are fortifications elements. Some are long-defunct and almost unidentifiable, the others are massive and stand as an important part of a cityscape. Both can serve as good reference points and both have hidden secrets and traps. As mentioned, cartometric analyses and geotransformations of early plans into modern space are based on stable GCPs (Ground Control Points). Fortifications are useful, as they often shape the space of a city, conserving spatial relations. It refers mainly to bastions of large stronghold works, with well-visible characteristic points (Benavides, 2004), but even smaller features like flèches can be of use. They serve as reference points (Nieścioruk, 2011a: 144), but they can have other meanings too. Being a part of municipal grounds, they remained unbuilt even long after fortifications themselves have virtually disappeared (Fig. 3), preserving ownership and structural relations (Nieścioruk, 2005: 53). The question of using quite complicated constructions like fortifications needs more investigation than in a case of a regular building, when the only possible error refers to using part of the building that has been modified. A detailed view of fortifications, quite common on early plans, the nature of these constructions and (sometimes) a perspective or a semi-perspective depiction on a plan make it hard to select a proper, reliable reference point (Benavides, Koster, 2006).

The mentioned spatial relations and land ownership traces are visible in a case of other features too, especially roads and former rural areas incorporated (mainly in the 20th century) into city built-up zones. The land boundaries are very stable – even if they are not easily visible in a modern space, they

preserve former relations and act as a reminder of power or authority (Plit, 2011), they are also sometimes remarked with artefacts like stones, posts, and local roads along them (Jop, 2011). Local roads (or roads in general) are great landscape elements storing past information. They shape and create the space together with interconnected inhabited areas (Fig. 4). Any change in an importance, a delicate shift or serious re-valuation in a road network can heavily influence a role of a settlement, leav-

ing former important and bustling villages a bit out of a way (de Mezer, 2009) An ex-village road can be, on the other hand, adopted to a modern network. It is of course typical with transit roads going through and out of towns and gathering settlement along them, but can also happen in a case of a demolished village replaced with a modern residential area, leaving the former village road as the one of a few remains of a previous landscape (Nieścioruk, 2011b).



Fig. 3. Unbuilt areas of the 17th century fortification in Lublin (Poland) preserving a land property relations in a modern cityscape

Source: Nieścioruk, 2011a: 144

The identification of all of the above is based on maps that store information from the past, even if this information is sometimes hard to interpret or understand and a bit deterring due to technical reasons (Chías, Abad, 2009). Maps can help conducting multi-aspect analyses too, like general spatial arrangements (Chojnacka, Wilkaniec, 2009) or abandoned (Affek, 2011) and deserted (Soszyński, 2012) villages environment research. Maps can also transmit a cultural-only or a non-material information, which are, in general, elements forming cultural landscape, (together with manmade features). The former are all aspects of human non-commercial activities like commemorating persons or events important for locals or sacralising a space by means

of crossroad shrines (Marszałek, 2008; Pawłowski, 2011). Shrines were votive, thanksgiving or just ritual, but for their users, members of a local society, they were filled with and based on personal stories, regional incidents or national history events (Garbacz, 2009: 274). The latter (non-material) refers to, for example, toponyms. Names can store information about the past, about human interaction with landscape, naming phenomena and objects to make them more common, friendly, humanised (Lipińska, 2003: 132–133), to communicate clearly and to commemorate. The nation (society) lives as long as its language is alive; hence, names store and serve for more than just a georeference for locals – they keep the spirit of a place alive together with its former

users. Toponymic research are done on a different scale, but small area investigation can show information that is not available in other scales. Maps come in handy here, preserving names and their changes even when their users, who understood them, are no longer living (Chylińska, Kosmala, 2010). However, the most useful cartographic material are maps from the 19th and 20th century, showing a relatively recent past and quite a high number of toponyms

(Makarski, 2005: 119). Names can remain in the cultural landscape even after when there has been serious changes in it – when former villages become part of a city, some toponyms are adopted to a new space, losing their reference objects and some are copied to a new object, being names of streets or districts (Nieścioruk, 2005). Names also record process of settlement changes and spread, together with their legislative and demographic background (Janicki, 2011).



Fig. 4. Former village road (map of 1961 and aerial photography of 1976) becoming path on a brim of contemporary residential area in Lublin (modern map and photography)

Source: Nieścioruk, 2011b: 451

4. Application of Geographic Information Systems in environmental change analyses using early maps

It has been mentioned a few times above that analysis of early maps is important also in the context of geotransformation of such material into a modern reference system. It allows further analyses and lets one discover relations not seen in other materials or in other ways. The base of transformation is a set of already described stable points (GCPs), which are used as referencing elements between an early and modern map. Proper selection of this is the critical part of cartometric analyses as well as a decision on the transformation method, no matter what scale or geographic extent is dealt with (Baletti, 2006; Gaspar, 2010; Nieścioruk, 2011a). Modern technologies in the form of a hardware equipped with GIS software can help conducting the transformation process with selected points and method. It is, however, not the only advantage of GIS. There are many more, even in context of researches on early maps, past landscape and its analyses.

In the last decade, GIS has been used so widely in researches related to the past (in both natural and anthropogenic aspects) that a new term referring to these activities and possibilities has emerged: historic GIS, often shortened to GIS (Gregory, Healey, 2007: 638). It is an application of spatial methods in the field of history. A new tool and a new approach to some scholars in history, defining it as a new use for a map (which some of them had been already familiar with) allowing them to use spatial databases with all the possibilities of analyses as well as technical aspects (Gregory, Healey, 2007: 638-639). For a scientist related more to Earth Science the tool and the approach have given new possibilities, although the methodology is often known to them. However, this group already forms a new speciality, looking at the past through a space-oriented window, creating, managing and analysing databases of the world that no longer exists (Knowles, 2005: 7).

The most obvious use of GIS with early maps is superimposing them on the modern space in order to analyse the changes, as mentioned above. This analysis can be based on a raster image only

(scanned maps) or combined with a digital vector data of different kinds. The scope of the analyses is the same as with no GIS – the difference is the tool only. The subject of research can be land cover changes (Wilson, 2005), water network (Pradela, Solarski, 2010), land use and its changes (Bigler, 2005; Pearson, 2006), non-material human activity, for example boundaries changes (Chías, Abad, 2009) and many more, similar to previously described.

What makes research with GIS unique is its ability to produce an easily quantitative outcome. Computer tools of data processing can perform many computations faster and – what is more important – some of them are impossible to conduct in other ways or can be done with a very limited scope. Such numeric statistics can be a simple result of an environment change analysis, e.g. land use/land cover (van der Wal, Pye, 2003; Bigler, 2005; Wilson, 2005; Koziel, 2010; Affek, 2011; Hildebrandt-Radke, Przybycin, 2011; Skaloš et al., 2011) or more complicated, based on a created model and with a spatial outcome in the form of maps (see Fig. 5) being the result of a cartographic method of research (van Eetvelde, Antrop, 2004; Pearson, 2006; Nasiłowska, 2008). Other numeric features are these characterising not only the subject of the map, but the map itself as a source material and historic monuments, both in the form of coefficients and of graphics (including the resulting maps) (Dunajski, Siczka, 2008; Gaspar, 2010; Nieścioruk, 2011a). Maps can be assessed also in terms of proper land use recognition and land classification error propagation (not only what is shown, but also how true it is), which is not always taken into consideration (Nita, Myga-Piątek, 2012). Such techniques like fuzzy logic classification can be used here (Zachwatowicz, 2012). Land cover change statistics in GIS can be computed not only on maps solely – aerial photography can be used as well as more original approaches, for example coverage change in a comparison of ground-based photography from different periods (Kaim, Kolecka, 2010).

The numbers show a more mathematical image of the past. One cannot only evaluate the past environment in terms of absolute (how much) and relative (less or more) values, but also compare it with its current state, finding information about qualitative (meadows turned into fields) and, most of all, quantitative changes (20% decrease in forest areas).

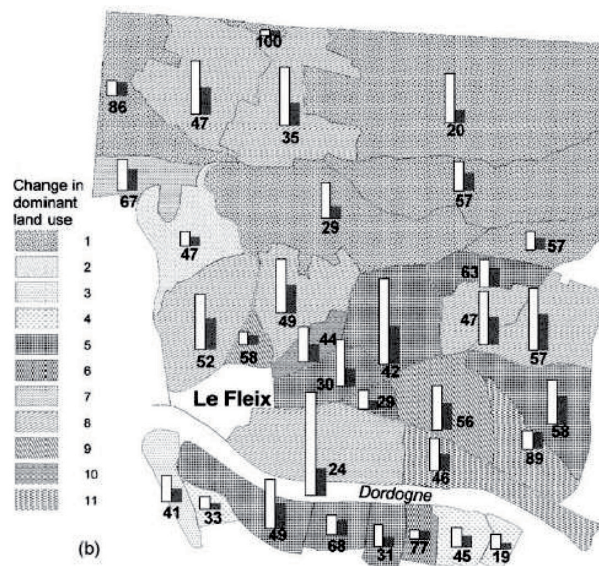


Fig. 5. The change map for dominant land use and number of fields in Le Fleix – Monfaucon (France). Classes show land use change (for example: 4 is arable land and grassland changed to fruit orchards), bars show number of fields

Source: van Eetwede, Antrop, 2004: 91

5. 3D visualisations and animations in GIS

This is, however, still a numeric presentation. The important function of GIS (in terms of early maps and their analyses) is visualisation – turning numbers into images. The cartographic methods can be applied in GIS, but the system shows its potential when it comes into third dimension too. Even the simplest 3D models give new quality to early maps – georeferenced imaged draped on a modern digital elevation model (DEM) can help us in understanding and ‘feeling’ early maps (Rumsey, Williams, 2002). Such an effort is a step toward finding more data in early maps. When it can be analysed and visualised, why not to combine both? The result can be, for example, a visualisation of past terrain analysis outcome in the form of a historical relief with proper land cover added (Harris, 2002). It is not the limit of visualisations in GIS of course. The final step so far is recreating a past landscape as a three-dimensional model with both natural and anthropogenic features, based on, mainly, an analyses of early maps supported by field works, iconography studies etc. (Brumana, Achille, 2007). This

can even be combined with constructing objects’ 3D models using laser scanning of existing historical buildings (Visintini et al., 2007) and full landscape generation (see Fig. 6) (de Boer, 2010), leading to an almost virtual reality of the past. This aspect of visualisation, on the border of hardware, media, and IT technology is more and more presented in the GIS world (Batty, 2008).



Fig. 6. A rendered virtual historic landscape of Naaldwijk area I the Netherlands

Source: de Boer, 2010: 55

Such works are the goals of analyses, leading to new results or a part of research of other kind, when a comparison of past views with the modern is a part of a broader analysis (Oleński, 2012). The end-user of a virtual image is not only a specialist,

it can be one that can have an interest in some (often only visual) aspect of the research results. Virtualisation is even more general-user-oriented, when it is available to everyone, not only as a single-machine research outcome. Hence some projects combining early maps, historical data, reconstructions

and knowledge are prepared and finalised as internet services (Fig. 7), where users can not only see the 3D past and use it object-oriented database, but also fully navigate through the past landscape on their own, using any internet-connected computer (Przewodniki Lublin 2.0).



Fig. 7. Internet-based, 3D virtual reconstruction of historic Lublin city environment

Source: Przewodniki Lublin 2.0

Technically, visualisation is a graphic representation of data gathered in a database, so it is an important part of a research to create such a database (Gregory, Healey, 2007). It makes understanding a database approach easier, when one keeps in mind that map is a database itself, sometimes even having attribute tables, like 'analogue GIS' (Pearson, Collier, 2002: 108).

Gathering materials is one, visualisation is another aspect, but digitising data and making them sensitive to analyses in GIS is another serious part of the work. This introduces historians and historical geographers to the mostly unknown area of expertise, the IT world. It is not using software alone now, it is sometimes creating software solutions and fully digital data management environments, including DBMS (database management system). All this can make the subject even more fascinating, demanding and interdisciplinary. There are a growing number of such interdisciplinary projects, combining early maps, historical data, cartographic visualisation and databases supplying all this and more information to an end-user (Ray, 2002; Szady, 2008; Micalizzi et al., 2012).

6. Conclusions

The examples above show a great diversity of use of cartographic materials in an area of environment change analyses and assessments. This profusion of cases shows how informative and important source maps are. It was also stressed that their use is sometimes limited due to specific map language (for example generalisation), geometric quality problems (caused by methods of early maps creation or political reasons) and lack of proper, similar scale time series. All this have to be taken into consideration during a research process.

The use of maps may be very broad and the cartographic method of research outcomes may be interesting. Modern technology gives a tool to apply that method in a more convenient way and broaden its use among users from many fields, from hardcore science applications to popularising its results and building up spatial awareness of environment change problems among society.

References

- Affek, A.**, 2011: Wartości krajobrazu opuszczonego przez ludność na przykładzie byłej rusińskiej wsi Borysławka (Values of landscape abandoned by people. A case study of former Ruthenian village Borysławka – in Polish). In: Bernat, S. editor, Niematerialne wartości krajobrazów kulturowych, *Prace Komisji Krajobrazu Kulturowego*, Numer 15, pp. 148–160.
- Alexandrowicz, S.**, 2008: Wykorzystanie dawnych źródeł kartograficznych w badaniach nad historią Polski XVI i XVII wieku (Using the cartographic sources in researches on history of Poland in the 16th and 17th century – in Polish). In: Alexandrowicz, S. and Skrycki, R. editors, *Dawna mapa źródłem wiedzy o świecie, Z dziejów kartografii*, Tom XIV, Szczecin: Instytut Historii Nauki PAN, Instytut Historii i Stosunków Międzynarodowych Uniwersytetu Szczecińskiego, pp. 29–50.
- Baletti, C.**, 2006: Georeference in the analysis of the geometric content od early maps. In: *e-Perimetron*, Vol. 1, No. 1, pp. 32–42, available at: www.e-perimetron.org/Vol_1_1/Baletti.pdf, DoA: March 2012.
- Batty, M.**, 2008: Virtual reality in Geographic Information Systems. In: Wilson, J.P. and Fotheringham, A.S. editors, *The handbook of Geographic Information Science*, Oxford: Blackwell Publishing, pp. 317–334.
- Beineke, D.**, 2001: Verfahren zur Genauigkeitsanalyse für Altkarten (Methods of early maps analyses – in German), Schriftenreihe Studiengang Geodäsie und Geoinformation Universität der Bundeswehr München 71.
- Benavides, J.**, 2004: El uso de metodos históricos de levantamiento topográfico y cartográfico en la elaboración de mapas confiables de ciudades: caso de estudio: Zwolle, Holanda (The use of historical land surveying and mapmaking methods in the making of reliable digital town maps. A case study: Zwolle, The Netherlands – in Spanish). In: *Scripta Nova*, Volumen VIII, Número 170(65), available at: www.ub.es/geocrit/sn/sn-170-65.htm, DoA: March 2012.
- Benavides, J. and Koster, E.**, 2006: Identifying surviving landmarks on historical maps. In: *e-Perimetron*, Vol. 1, No. 3, pp. 194–208, available at: www.e-perimetron.org/Vol_1_3/Benavides_Koster.pdf, DoA: March 2012.
- Bielecka, E. and Ciołkosz, A.**, 2000: Zmiany użytkowania ziemi w dorzeczu Odry w świetle zdjęć satelitarnych i archiwalnych materiałów kartograficznych (Assessment of land use changes in the Odra river catchment on the basis of satellite image and historical maps – in Polish). In: *Fotointerpretacja w Geografii*, Tom 31, pp. 91–102.
- Bigler, W.**, 2005: Using GIS to investigate fine-scale spatial patterns in historical American Indian agriculture. In: *Historical Geography*, 33, pp. 14–32.
- de Boer, A.**, 2010: Processing old maps and drawings to create virtual historic landscapes. In: *e-Perimetron*, Vol. 5, No. 2, pp. 49–57, available at: www.e-perimetron.org/Vol_5_2/deBoer.pdf, DoA: March 2012.
- Brumana, R. and Achille, C.**, 2007: E-historical sites. Georeferencing as availability of space-temporal data: historical cartography towards advanced 3D view. In: *e-Perimetron*, Vol. 2, No. 3, pp. 134–159, available at: www.e-perimetron.org/Vol_2_3/Brumana_Achille.pdf, DoA: March 2012.
- Chías, P. and Abad, T.**, 2009: GIS tools for comparing historical and contemporary landscapes through local map series. In: *e-Perimetron*, Vol. 4, No. 2, pp. 61–72, available at: www.e-perimetron.org/Vol_4_2/Chias_Abad.pdf, DoA: March 2012.
- Chojnacka, M. and Wilkaniec, A.**, 2009: Przekształcenia układów przestrzennych wsi na terenie Lednickiego Parku Krajobrazowego (Transformation of spatial arrangement in the villages in the Lednica Landscape Park – in Polish). In: Kuriata, Z. editor, *Polskie krajobrazy wiejskie dawne i współczesne, Prace Komisji Krajobrazu Kulturowego*, Numer 12, pp. 119–129.
- Chylińska, D. and Kosmala, G.**, 2010: Analiza zmian nazw lokalnych Chełmska Śląskiego i Raclawiczek w XX wieku jako przykład geograficznych badań przestrzeni toponimicznej Śląska (Changes of local names of Chełmno Śląskie and Raclawiczki in 20th century as an example of geographical research of toponymic space of Silesia – in Polish). In: *Polski Przegląd Kartograficzny*, Tom 42, Numer 1, pp. 30–39.
- Dawidek, J. and Turczyński, M.**, 2007: Dawne mapy topograficzne Lubelszczyzny w badaniach zmian stosunków wodnych (Former topographic maps of Lublin region in surveys of water conditions changes – in Polish). In: Michalczyk, Z., editor, *Obieg wody w środowisku naturalnym i przekształconym*, Lublin: Uniwersytet Marii Curie-Skłodowskiej, pp. 175–184.
- Dunajski, A. and Sieczka, M.**, 2008: The impact of rectification error on the analysis of landscape transformation based on archival maps. In: Plit, J. and Andrejczuk, W. editors, *Methods of landscape re-*

- search, Dissertation Commission of Cultural Landscape, No. 8, pp. 164–172.
- van Eetwede, V. and Antrop, M.**, 2004: Analyzing structural and functional changes of traditional landscapes – two examples from Southern France. In: *Landscape and Urban Planning*, Vol. 67, pp. 79–95.
- Garbacz, K.**, 2009: Na szlaku biłgorajskich kapliczek i krzyży przydrożnych (The trail of roadside shrines and crosses of Biłgoraj region – in Polish), Zielona Góra: Agencja Wydawnicza “PDN”.
- Gaspar, J.F.**, 2010: From the portolan chart of the Mediterranean to the latitude chart of the Atlantic, Lisbon: Universidade Nova de Lisboa, doctoral dissertation, available at: www.ciuhct.com/online/docs/thesis_joachim_gaspar_2010-v2.pdf, DoA: March 2012.
- Gołaski, J.**, 2011: Skąd wypływała Cybina? (Where was located the spring of Cybina river? – in Polish). In: *Polski Przegląd Kartograficzny*, Tom 43, Numer 4, pp. 399–402.
- Gregory, I.N. and Healey, R.G.**, 2007: Historical GIS: structuring, mapping and analyzing geographies of the past. In: *Progress in Human Geography*, Vol. 31, I. 5, pp. 638–653.
- Gregory, I.N. and Southall, H.R.**, 2002: Mapping British population history. In: Knowles, A.K. editor, *Past time, past place. GIS for history*, Redlands: ESRI Press, pp. 117–130.
- Harris, T.M.**, 2002: GIS in archaeology. In: Knowles, A.K. editor, *Past time, past place. GIS for history*, Redlands: ESRI Press, pp. 131–144.
- Hildebrandt-Radke, I. and Przybycin, J.**, 2011: Zmiany sieci hydrograficznej i zalesienia a melioracje regionu środkowej Obry (centralna Wielkopolska) w świetle danych historycznych i materiału kartograficznego (Changes of the hydrographic network and area under forest in the context of the Middle Obra melioration (central Wielkopolska region) in the light of historical data and cartographic material – in Polish). In: *Przegląd Geograficzny*, Tom 83, Numer 3, pp. 323–342.
- Ichikawa, K., Okubo, N., Okubo, S. and Takeuchi, K.**, 2006: Transition of the satoyama landscape in the urban fringe of the Tokyo metropolitan area from 1880 to 2001. In: *Landscape and Urban Planning*, Vol. 78, pp. 398–410.
- Janicki, G.**, 2011: Toponimy dorzecza Gielczwi – zapis historii krajobrazu kulturowego (Toponyms of the Gielczew river catchment – record of the history of cultural landscape – in Polish). In: Bernat, S., editor, Niematerialne wartości krajobrazów kulturowych, *Prace Komisji Krajobrazu Kulturowego*, Numer 15, pp. 75–90.
- Jop, R.**, 2011: Niematerialne wartości krajobrazu kulturowego w badaniach historycznych. Przykład granic i przestrzeni (Non-material values of the cultural landscape in historical research as exemplified by boundaries and space – in Polish). In: Bernat, S. editor, Niematerialne wartości krajobrazów kulturowych, *Prace Komisji Krajobrazu Kulturowego*, Numer 15, pp. 91–102.
- Kaim, D. and Kolecka, N.**, 2010: Zmiany pokrycia terenu w Tatrach Polskich określone na podstawie powtórzonej fotografii naziemnej (Land cover changes in the Polish Tatra Mountains using ground-based repeat photography – in Polish). In: *Prace Geograficzne UJ*, Zeszyt 123, pp. 31–45.
- Knowles, A.K.**, 2005: Emerging trends in historical GIS. In: *Historical Geography*, Vol. 33, pp. 7–13.
- Kociuba D.**, 2003: Zmiany funkcji dolin rzecznych na obszarze Lublina (Changes in the functions of river valleys in the Lublin area – in Polish). In: *Annales Universitatis Mariae Curie-Skłodowska, Sectio B*, Vol. LVIII, No. 5, pp. 121–137.
- Kowalik, K. and Suchożebrski, J.**, 2011: Wykorzystanie archiwalnych map i planów do analizy zmian starorzeczy Wisły w okolicach Warszawy (The use of archival maps and plans for the analysis of changes in old river-beds of the Vistula River in the vicinity of Warsaw – in Polish). In: Ostrowski, J. and Wespiański, P.E. editors, *Dawna kartografia miast. Z dziejów kartografii*, Tom XV, Warszawa: Instytut Historii Nauki PAN, Archiwum Państwowe m. st. Warszawy, Warszawskie Przedsiębiorstwo Geodezyjne S.A., Stowarzyszenie Przyjaciół Archiwum Państwowego m. st. Warszawy, pp. 455–464.
- Kozak, J. and Troll, M.**, 1994: Wykorzystanie zdjęć satelitarnych do badania deforestacji w Beskidzie Śląskim (Use of satellite images in the study of deforestation in the Silesian Beskid Mts – in Polish). In: *Fotointerpretacja w Geografii*, Tom 24, pp. 82–89.
- Kozieł, M.**, 2010: Ewolucja krajobrazu doliny Wieprza w Nadwieprzańskim Parku Krajobrazowym w XX wieku (Landscape evolution of the river Wieprz valley in Nadwieprzański Landscape Park in the 20th century – in Polish). In: Plit, J. editor, *Krajobrazy kulturowe dolin rzecznych. Potencjał i wykorzystanie*, *Prace Komisji Krajobrazu Kulturowego*, Numer 13, pp. 41–53.

- Krawczyk, J.**, 1993: Wykorzystanie metody fotointerpretacyjnej do badania zmian powierzchni lasu w rezerwacie ścisłym Białowieskiego Parku Narodowego (Application of aerial photographs for examining forest change for the Białowieża National Park – in Polish). In: *Fotointerpretacja w Geografii*, Tom 23, pp. 153–160.
- Lipińska, B.**, 2003: Kultura użytkowania przestrzeni – degradacja krajobrazu wiejskiego (The culture of landscape usage – degradation of a rural landscape – in Polish). In: Liżewska, I. and Knecher, W. editors, *Zachowane – ocalone? O krajobrazie kulturowym i sposobach jego kształtowania*, Olsztyn: Wspólnota Kulturowa „Borussia”, pp. 128–137.
- Makarski, W.**, 2005: Rola mikrotoponimii i hydronimii w badaniach osadniczych na przykładzie materiałów z pogranicza polsko-ruskiego (The role of microtoponymy and hydronymy in settlement researches on the example of materials from Polish-Russian boundary – in Polish). In: Lesiów, M. and Olejnik, M. editors, *Mikrotoponimia na pograniczach językowo-kulturowych*, Lublin: Uniwersytet Marii Curie-Skłodowskiej, pp. 115–124.
- Marszałek, E.**, 2008: Leśne ślady wiary (Marks of faith in forests – in Polish), Krosno: Ruthenus.
- Maruszczak, H.**, 1997: Changes of the Vistula river course and development of the flood plain in the border zone of the South-Polish upland and Middle-Polish lowlands in historical times. In: *Landform Analysis*, Vol. 1, pp. 33–39.
- Meksuła, M.**, 2001: Kartograficzne sposoby prezentacji dynamiki zjawisk (Cartographic presentation methods of dynamic phenomena – in Polish). In: *Polski Przegląd Kartograficzny*, Tom 33, Numer 4, pp. 328–338.
- de Mezer, E.**, 2009: Konsekwencje zmiany rangi dawnych traktów we współczesnym układzie komunikacyjnym na przykładzie wsi Raczkowo (Consequences of changes in the rank of former routes in the contemporary road system, based on the village of Raczkowo – in Polish). In: Kuriata, Z. editor, *Polskie krajobrazy wiejskie dawne i współczesne, Prace Komisji Krajobrazu Kulturowego*, Numer 12, pp. 150–157.
- Micalizzi, P., Magaouda, S., Buonora, P. and d’Elia, L.S.**, 2012: A GIS for the city of Rome: archives, architecture, archeology. In: *e-Perimetron*, Vol. 7, No. 1, pp. 28–35, available at: [www.e-perimetron.org/Vol_7_1/Micalizzi et al.pdf](http://www.e-perimetron.org/Vol_7_1/Micalizzi_et_al.pdf), DoA: April 2012.
- Nasiłowska, S.**, 2008: Zmiany użytkowania ziemi zlewni górnej Narwi w XIX–XX wieku (Land use changes in the basin of upper Narew, in 19th–20th century – in Polish). In: *Teledetekcja Środowiska*, Tom 40, pp. 53–68.
- Nieścioruk, K.**, 2005: Palcem po planie (With finger on a plan – in Polish). In: *Scriptores*, Numer 29, pp. 52–58.
- Nieścioruk, K.**, 2011a: Analysis and evaluation of the 18th century plan of Lublin as an example of a comprehensive approach in the research of early cartographic materials. In: *e-Perimetron*, Vol. 6, No. 3, pp. 138–151, available at: www.e-perimetron.org/Vol_6_3/Niescioruk.pdf, DoA: February 2012.
- Nieścioruk, K.**, 2011b: Archiwalne materiały kartograficzne jako źródło informacji o przekształceniach przestrzeni dawnej strefy podmiejskiej (Cartographic archive materials as a source of information about space transformation in former suburban areas – in Polish). In: Ostrowski, J. and Wespiański, P.E. editors, *Dawna kartografia miast. Z dziejów kartografii*, Tom XV, Warszawa: Instytut Historii Nauki PAN, Archiwum Państwowe m. st. Warszawy, Warszawskie Przedsiębiorstwo Geodezyjne S.A., Stowarzyszenie Przyjaciół Archiwum Państwowego m. st. Warszawy, pp. 445–453.
- Nita, J. and Myga-Piątek, U.**, 2012: Rola GIS w ocenie historycznych opracowań kartograficznych na przykładzie Wyżyny Częstochowskiej (Landscape consequences the growth of forests of the Czestochowa Upland – in Polish). In: Plit, J. and Nita, J. editors, *Źródła kartograficzne w badaniach krajobrazu kulturowego, Prace Komisji Krajobrazu Kulturowego*, Numer 16, pp. 116–135.
- Nowakowska, P.**, 2008: Zmiany w zagospodarowaniu przestrzennym Służewca Przemysłowego w latach 1976–2001 (Functional structure changes of Służewiec Przemysłowy in year 1976–2001 – in Polish). In: *Teledetekcja Środowiska*, Tom 40, pp. 69–84.
- Nowocien, J.**, 2011: Zmiany struktury przestrzennej Białegostoku w latach 1967–2006 na podstawie analiz zdjęć lotniczych (Changes in the spatial structure of Białystok in 1967–2006 based on an analysis of aerial photographs – in Polish). In: *Teledetekcja Środowiska*, Tom 45, pp. 51–65.
- Oleński, W.**, 2012: Cyfrowa panorama miasta. GIS w analizach krajobrazu Warszawy (Digital panorama of town. GIS in landscape analyses of Warsaw – in Polish). In: *ArcanaGIS*, Numer 3, pp. 27–30.
- Pabjanek, P.**, 1999: Zmiany użytkowania ziemi na Polanie Białowieskiej do 1989 roku (Land-use change on the Białowieża Cleaning (until 1989) – in Polish). In: *Fotointerpretacja w Geografii*, Tom 30, pp. 3–28.

- Pawłowski, A.**, 2011: Trzy krzyże nad Parchatką – symbol w krajobrazie kulturowym Małopolskiego Przełomu Wisły (Three crosses over Parchatka – a symbol in the Malopolski Vistula Gap cultural landscape – in Polish). In: Bernat, S. editor: Niematerialne wartości krajobrazów kulturowych, *Prace Komisji Krajobrazu Kulturowego*, Numer 15, pp. 54–63.
- Pearson, A.W.**, 2006: Digitizing and analyzing historical maps to provide new perspectives of the agricultural landscape of England and Wales. In: *e-Perimetron*, Vol. 1, No. 3, pp. 178–193, available at: www.e-perimetron.org/Vol_1_3/Pearson.pdf, DoA: March 2012.
- Pearson, A.W. and Collier, P.**, 2002: Agricultural history with GIS. In: Knowles, A.K. editor, *Past time, past place. GIS for history*, Redlands: ESRI Press, pp. 105–116.
- Plit, J.**, 2007: Analiza starych map jako źródło informacji o przemianach środowiska geograficznego (Analysis of early maps as a source of information about the environment changes – in Polish). In: Sołtysik, R. and Suligowski, R. editors, Rola geografii fizycznej w badaniach regionalnych, *Nauki geograficzne w badaniach regionalnych*, Tom I, Kielce: Instytut Geografii Uniwersytetu im. Jana Kochanowskiego w Kielcach, Oddział Kielecki Polskiego Towarzystwa Geograficznego, Polskie Towarzystwo Geograficzne, pp. 197–203.
- Plit, J.**, 2010: Zmiany koryta Niemna w ciągu 200 lat (na odcinku od Hożej do Mielnika) (Changes in the riverbed of Neman over 200 years (over the segment from Hoża to Mielnik) – in Polish). In: Plit, J. editor, *Krajobrazy kulturowe dolin rzecznych. Potencjał i wykorzystanie*, *Prace Komisji Krajobrazu Kulturowego*, Numer 13, pp. 78–87.
- Plit, J.**, 2011: Piętno władzy i właścicieli odcisnięte w krajobrazie kulturowym (The bands of the authority and owners in cultural landscape – in Polish). In: Bernat, S. editor, Niematerialne wartości krajobrazów kulturowych, *Prace Komisji Krajobrazu Kulturowego*, Numer 15, pp. 125–138.
- Pradela, A. and Solarski M.**, 2010: Wykorzystanie Systemów Informacji Geograficznej do badań przemian powierzchniowej sieci hydrograficznej w XIX i XX wieku na przykładzie bytomskiego rejonu złożowego (Use of the Geographical Information System to researches of surface hydrographic network changes in 19th and 20th century on the Bytom deposit area example – in Polish). In: Ciupa, T. and Suligowski, R. editors, *Woda w badaniach geograficznych*, Kielce: Instytut Geografii Uniwersytetu im. Jana Kochanowskiego w Kielcach, pp. 231–241.
- Przewodniki Lublin 2.0 (Lublin 2.0. guides – in Polish), Lublin: Ośrodek Brama Grodzka – „Teatr NN”, www.przewodniki.teatrnn.pl, DoA: June 2012.
- Ray, B.C.**, 2002: Teaching Salem witch trials. In: Knowles, A.K. editor, *Past time, past place. GIS for history*, Redlands: ESRI Press, pp. 19–34.
- Rumsey, D. and Williams, M.**, 2002: Historical maps in GIS. In: Knowles A.K. editor, *Past time, past place. GIS for history*, Redlands: ESRI Press, pp. 1–18.
- Saliszczew, K.A.**, 1998: Kartografia ogólna (Cartography – in Polish), Warszawa: Wydawnictwo Naukowe PWN.
- Sanecki, J. editor**, 2006: Teledetekcja. Pozyskiwanie danych (Remote sensing. Data collecting – in Polish), Warszawa: Wydawnictwo Naukowo-Techniczne.
- Skaloš, J., Weber, M., Lipský, Z., Trpáková, I., Šantrůcková, M., Uhlířová, L. and Kukla P.**, 2011: Using old military survey maps to analyse long-term land cover changes – Case study (Czech Republic). In: *Applied Geography*, Vol. 31, pp. 426–438.
- Skocki, K.**, 2001: Zmiany pokrycia terenu przygranicznych obszarów Polski i Rosji na terenie b. Prus Wschodnich od lat trzydziestych XX w. (Land cover changes in Polish- Russian border region (former East Prussia) since 30's XX century – in Polish). In: *Teledetekcja Środowiska*, Tom 32, pp. 87–105.
- Skrycki, R.**, 2011: Rękopiśmienne plany Szczecina Gerharda Corneliusa von Walrave z pierwszej połowy XVIII wieku w zbiorach Muzeum Narodowego w Szczecinie (Manuscript maps of Stettin (Szczecin) by Gerhard Cornelius von Walrave from the first half of the eighteenth century – in Polish). In: Ostrowski, J. and Wespiański, P.E. editors, *Dawna kartografia miast. Z dziejów kartografii*, Tom XVI, Warszawa: Instytut Historii Nauki PAN, Archiwum Państwowe m. st. Warszawy, Warszawskie Przedsiębiorstwo Geodezyjne S.A., Stowarzyszenie Przyjaciół Archiwum Państwowego m. st. Warszawy, pp. 95–111.
- Sobała, M.**, 2012: Zastosowanie austriackich map katastralnych w badaniach użytkowania ziemi w połowie XIX wieku (Application of Austrian Cadastral Maps in research on land use in the middle of 19th century – in Polish). In: *Polski Przegląd Kartograficzny*, Tom 44, Numer 4, pp. 324–333.
- Sochacka, E., Pabjanek, P. and Olędzki, J.**, 2008: Analiza zmian użytkowania ziemi zlewni Strugi Toruńskiej na podstawie wieloczasowych zdjęć lotniczych (Analysis of land use changes in the Struga Toruńska basin

- using multitemporal aerial photo – in Polish). In: *Tel-edetekcja Środowiska*, Tom 39, pp. 67–85.
- Solarski, M. and Pradela, A.**, 2010: Przemiany wybranych form rzeźby Wyżyny Miechowskiej w latach 1883–1994 (Changes of the selected land relief forms of the Miechowska Upland in 1883–1994 years – in Polish). In: Machowski, R. and Rzętała, M.A. editors, *Z badań nad wpływem antropopresji na środowisko*, Tom XI, Sosnowiec: Studenckie Koło Naukowe Geografów Uniwersytetu Śląskiego, Wydział Nauk o Ziemi Uniwersytetu Śląskiego, pp. 78–92.
- Soszyński, D.**, 2012: Krajobraz opuszczonych wsi Polesia w świetle archiwalnych materiałów kartograficznych (Polesie deserted villages landscape in the light of the archival cartographic materials – in Polish). In: Plit, J. and Nita, J. editors, *Źródła kartograficzne w badaniach krajobrazu kulturowego*, *Prace Komisji Krajobrazu Kulturowego*, Numer 16, pp. 219–228.
- Szady, B.**, 2008: Zastosowanie systemów informacji geograficznej w geografii historycznej (Application of the systems of geographic information in historic geography – in Polish). In: *Polski Przegląd Kartograficzny*, Tom 40, Numer 3, pp. 279–283.
- Szady, B.**, 2010: Geografia struktur religijnych i wyznaniowych w Koronie w II połowie XVIII wieku (Geography of religious and confessional structures in Crown Poland in the second half of 18th century – in Polish), Lublin: Katolicki Uniwersytet Lubelski.
- Szaryk, E.**, 1983: Zmiany użytkowania ziemi na terenie Bełchatowskiego Okręgu Przemysłowego w świetle interpretacji zdjęć lotniczych (Changes in the land utilization structure of the Bełchatowski Okręg Przemysłowy based on air photographs interpretation – in Polish). In: *Fotointerpretacja w Geografii*, Tom 16, pp. 63–73.
- Szczypek, T. and Wika S.**, 1990: Przekształcenia krajobrazów na obszarze Olkusza w świetle fotointerpretacji i badań terenowych (Transformations of landscapes in the Olkusz city area based on photointerpretation and field investigations – in Polish). In: *Fotointerpretacja w Geografii*, Tom 20, pp. 73–92.
- Visintini, D., Guerra, F., Adami, A. and Vernier P.**, 2007: A 3D virtual model of the Gorizia downtown., Italy: by matching historical maps with aerial and terrestrial surveying techniques. In: *e-Perimetron*, Vol. 2, No. 3, pp. 117–133, available at: www.e-perimetron.org/Vol_2_3/Visintini_etal.pdf, DoA: March 2012.
- van der Wal, D. and Pye, K.**, 2003: The use of historical bathymetric charts in a GIS to assess morphological change in estuaries. In: *The Geographical Journal*, Vol. 169, I. 1, pp. 21–31.
- Wilson, J.W.**, 2005: Historical and computational analysis of long-term environment change: forest in the Shenandoah Valley of Virginia. In: *Historical Geography*, Vol. 40, pp. 33–53.
- Wnuk, R., Poleszak, S., Jaczyńska, A. and Śladecka M.**, 2007: Atlas polskiego podziemia niepodległościowego 1944–1956 (The atlas of the independence underground in Poland 1944–1956 – in Polish), Warszawa – Lublin: Instytut Pamięci Narodowej.
- Wolak, B.**, 2008: Badanie dynamiki zjawisk na podstawie kart katastralnych i map ewidencyjnych (Research of the phenomena dynamics on the basis of collected cadastral maps – in Polish). In: Alexandrowicz, S. and Skrycki, R. editors: *Dawna mapa źródłem wiedzy o świecie. Z dziejów kartografii*, Tom XIV, Szczecin: Instytut Historii Nauki PAN, Instytut Historii i Stosunków Międzynarodowych Uniwersytetu Szczecińskiego, pp. 61–70.
- Zachariasz, A.**, 2012: Przydatność archiwalnych źródeł kartograficznych dla współczesnych badań krajobrazowych (The value of archival cartographic sources for contemporary landscape research – in Polish). In: Plit, J. and Nita, J. editors, *Źródła kartograficzne w badaniach krajobrazu kulturowego*, *Prace Komisji Krajobrazu Kulturowego*, Numer 16, pp. 63–83.
- Zachwatowicz, M.**, 2012: Detekcja historycznych przemian pokrycia terenu z zastosowaniem elementów logiki rozmytej (Detection of historical land cover changes with the use of fuzzy logic – in Polish). In: Plit, J. and Nita, J. editors, *Źródła kartograficzne w badaniach krajobrazu kulturowego*, *Prace Komisji Krajobrazu Kulturowego*, Numer 16, pp. 84–94.